



NORTH CAROLINA COMMUNITY COLLEGE SYSTEM
H. Martin Lancaster, President

February 23, 2001

MEMORANDUM

TO: Community College Business Officers

FROM: Robert R. Blackmun
Associate Vice President for Information Resources & Technology

SUBJECT: College Information System Bookstore System

As you may know, the contract for our new community college information system includes a system-wide license for the Riverview bookstore system from POSatek, Inc. While the contract includes the software and the integration of this system with the integrated college information system (Datatel's Colleague system, with enhancements provided under the contract with Affiliated Computer Services), the equipment and services for implementing the system are the responsibility of each community college.

Based on information provided by Datatel and POSatek, the relationship between the systems is as follows:

1. The Colleague system is integrated with POSatek/Riverview, so that financial transactions relating to bookstore operations can be posted (if appropriate) to the college's General Ledger and student purchases can be checked against student account status (especially for financial aid) and purchases posted to the student account.
2. The POSatek/Riverview system can either (a) provide the full bookstore management system or (b) be integrated with either of the Follett textbook management systems (CourseWorks or TomTracks).

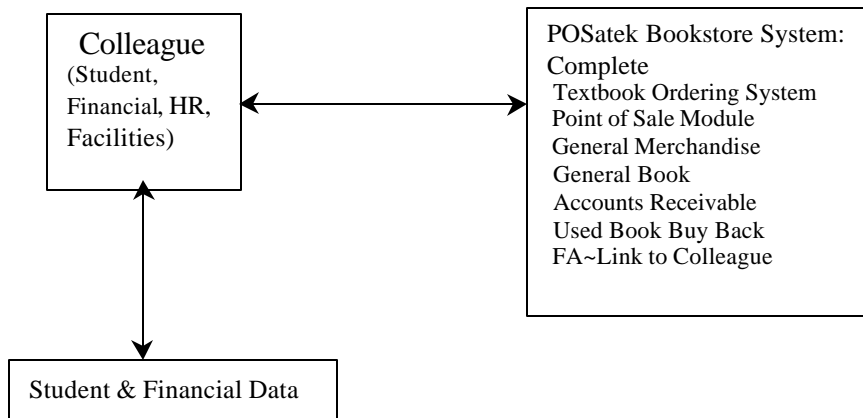
As shown in the flow charts below, the Riverview/POSatek point-of-sale system would replace any existing point-of-sale system, such as Follett's First System and/or FCS (from Integris, which has been purchased by POSatek).

Since some community colleges may wish to implement a new bookstore management system, or replace an existing system, prior to the implementation of the new integrated

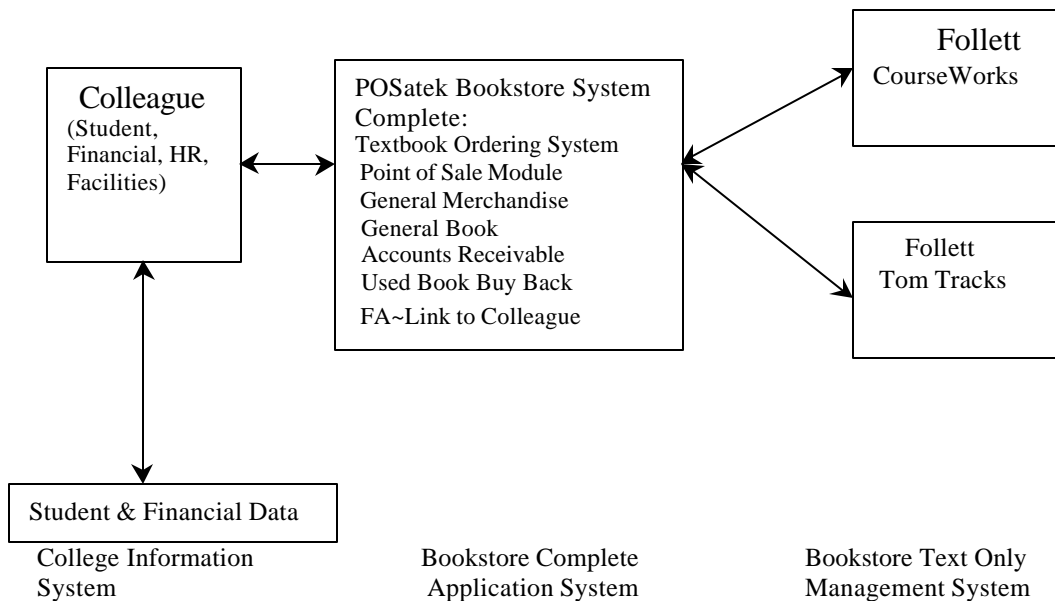
community college information system, the license for the POSatek system is available to all community colleges. The detailed information for doing so is in Numbered Memo CC01-048.

Below is a basic "flow chart" of these systems:

- (a) POSatek Point-of-Sale system integrated with Datatel's Colleague.



- (b) The POSatek system can be integrated with either of the Follett textbook management systems (CourseWorks or TomTracks) even though the "Complete" POSatek system is present.



- c: Community College Presidents