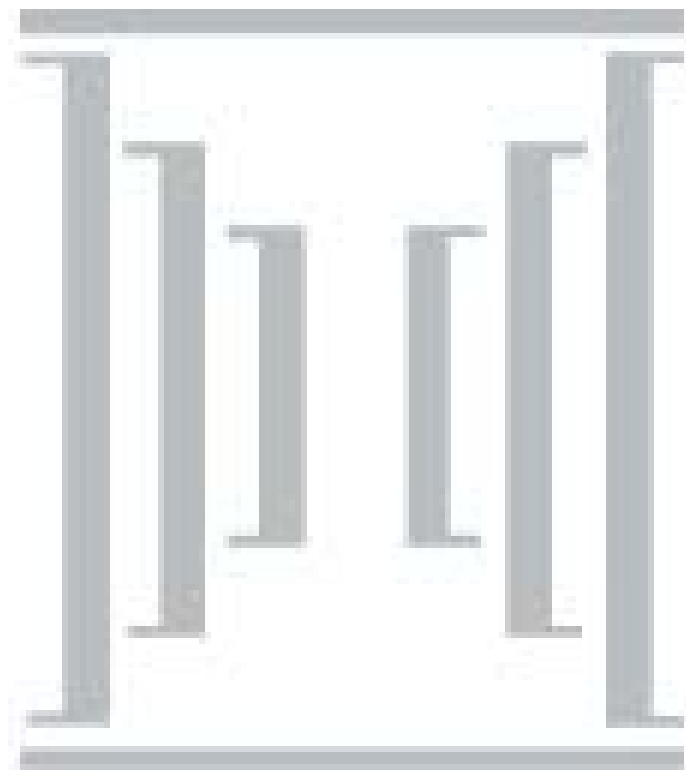


# Data Trends and Briefings

January 13, 2010



North Carolina Community College System  
Office of the President

## **Five-Year Trend Analysis of Student Success: Achieving Intermediate Milestones (From 2002 cohort to 2006 cohort)**

### **Methodology**

- Curriculum student records from CRPFAR (Curriculum Registration, Progress, and Financial Aid Report) data files for Fall 2002, Fall 2003, Fall 2004, Fall 2005, and Fall 2006 (For a few measures, Fall 2007 cohort was also added.)
- Curriculum students seeking associate degree, certificate, and diploma, enrolled for the first time in the fall 2002, fall 2003, fall 2004, fall 2005 and fall 2006 (Transitional students were excluded from the cohorts.)
- Attendance status was either full-time or part-time at the time of fall registration
- Age groups were divided into two: 22 years old or younger vs. 23 or older
- Utilized the Achieving the Dream framework for benchmarking purpose. Statistical analysis done by CCRC (Community College Research Center at Columbia University) utilizing curriculum student records in the Florida Community College System revealed that achieving some of the intermediate milestones listed below, such as first-year credit milestone, significantly increased final student outcomes — statistically significant at  $p \leq .05$  level in multivariate regression analysis.

### **Student Success Measures**

1. First-Year Intermediate Milestones
  - Persisted fall to spring
  - Passed 80% or more of courses attempted: Letter grades A, B, C, and D were considered as passing grades.
  - First-year credit milestone: Earned 24 or more credit hours for full-time students/ earned 18 or more credit hours for part-time students.
2. Second-Year Intermediate Milestones
  - Persisted fall to fall
  - Enrolled in developmental education math courses by year 2 (Associate and diploma-seeking students only)
  - Passed developmental education math courses by year 2 (Associate and diploma-seeking students only) — course letter grade D or better
  - Achieved the two year credit hour milestone — earned 42 or more credit hours for full-time students / earned 24 or more credit hours for part-time students
3. Third-Year Intermediate Milestones
  - Passed gatekeeper English or higher by year 3 — ENG 111 (Expository Writing) or higher
  - Passed gatekeeper math or higher by year 3 — MAT 151 (Statistics I), MAT 161 (College Algebra), and MAT 171 (Pre-calculus Algebra) or higher: College transfer students only

## Results Breakdowns by Attendance Status and Age Group by Milestones

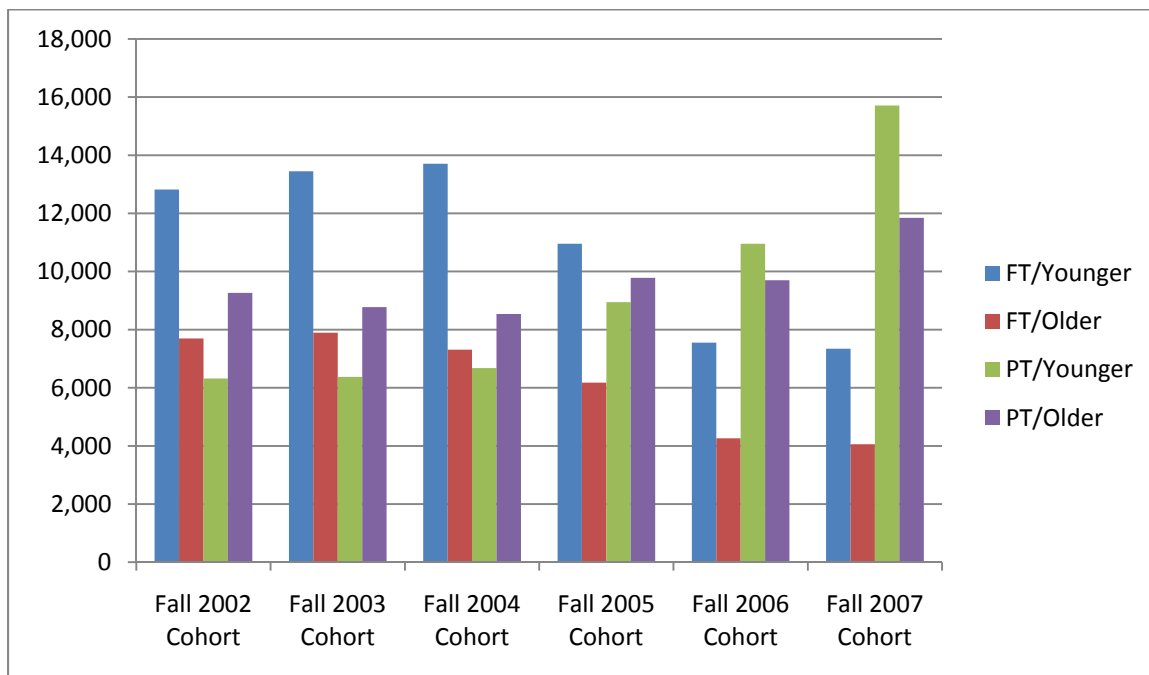
### 1. Cohort Descriptive Statistics

**Table 1. Cohort descriptive statistics by attendance status and age group**

	FT/Younger	FT/Older	PT/Younger	PT/Older	Total
<b>Fall 2002 Cohort</b>	12,823	7,698	6,322	9,266	36,109
<b>Fall 2003 Cohort</b>	13,449	7,893	6,373	8,774	36,489
<b>Fall 2004 Cohort</b>	13,706	7,312	6,676	8,540	36,234
<b>Fall 2005 Cohort</b>	10,957	6,177	8,945	9,783	35,862*
<b>Fall 2006 Cohort</b>	7,554	4,261	10,957	9,701	32,473*
<b>Fall 2007 Cohort</b>	7,342	4,056	15,712	11,847	38,957

\*Due to the conversion issues to CIS (College Information System), data captured in some colleges are not correct. Declines in the number of students are not the actual reflection of decrease in enrollment.

**Figure 1. Cohort descriptive statistics by attendance status and age group**



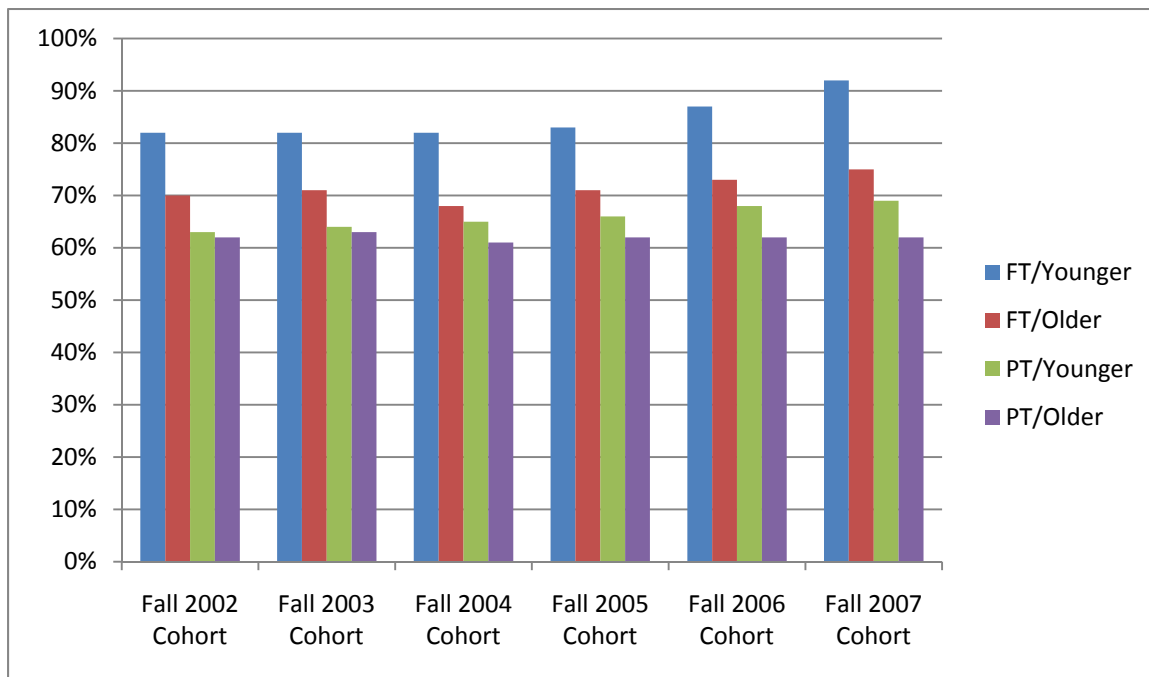
## 2. First-Year Intermediate Milestones

### A. Persisted fall to spring

Table 2-1. Persisted fall to spring by attendance status and age group

	FT/Younger	FT/Older	PT/Younger	PT/Older	Total
<b>Fall 2002 Cohort</b>	82%	70%	63%	62%	71%
<b>Fall 2003 Cohort</b>	82%	71%	64%	63%	72%
<b>Fall 2004 Cohort</b>	82%	68%	65%	61%	72%
<b>Fall 2005 Cohort</b>	83%	71%	66%	62%	71%
<b>Fall 2006 Cohort</b>	87%	73%	68%	62%	71%
<b>Fall 2007 Cohort</b>	92%	75%	69%	62%	72%

Figure 2. Persisted fall to spring by attendance status and age group



**Table 2-2. Persisted fall to spring by college (Persistence rate of the total cohort in each college)**

<b>College</b>	<b>Fall '02 Cohort</b>	<b>Fall '03 Cohort</b>	<b>Fall '04 Cohort</b>	<b>Fall '05 Cohort</b>	<b>Fall '06 Cohort</b>	<b>Fall '07 Cohort</b>
<b>Alamance CC</b>	67%	71%	72%	68%	70%	73%
<b>AB Tech CC</b>	67%	69%	70%	69%	66%	69%
<b>Beaufort CCC</b>	77%	72%	74%	69%	73%	78%
<b>Bladen CC</b>	65%	70%	71%	68%	63%	69%
<b>Blue Ridge CC</b>	75%	71%	71%	76%	71%	73%
<b>Brunswick CC</b>	64%	69%	66%	64%	67%	70%
<b>Caldwell CC &amp; TI</b>	65%	69%	68%	69%	70%	73%
<b>Cape Fear CC</b>	73%	71%	73%	71%	72%	74%
<b>Carteret CC</b>	71%	72%	69%	71%	76%	75%
<b>Catawba Valley CC</b>	77%	78%	78%	76%	73%	73%
<b>Central Carolina CC</b>	62%	67%	61%	68%	63%	68%
<b>Central Piedmont CC</b>	77%	76%	78%	77%	Data not available**	70%
<b>Cleveland CC</b>	66%	77%	65%	66%	65%	71%
<b>Coastal Carolina CC</b>	64%	66%	65%	70%	68%	70%
<b>COA</b>	68%	67%	72%	67%	70%	72%
<b>Craven CC</b>	69%	63%	62%	65%	64%	64%
<b>Davidson County CC</b>	72%	74%	67%	71%	72%	67%
<b>Durham TCC</b>	73%	72%	70%	70%	72%	66%
<b>Edgecombe CC</b>	73%	73%	72%	69%	68%	76%
<b>Fayetteville TCC</b>	74%	79%	75%	76%	78%	75%
<b>Forsyth TCC</b>	74%	74 %	74%	73%	73%	74%
<b>Gaston College</b>	70%	72%	70%	72%	71%	73%

<b>Guilford TCC</b>	70%	70%	74%	71%	75%	73%
<b>Halifax CC</b>	70%	65%	71%	74%	67%	75%
<b>Haywood CC</b>	73%	75%	70%	69%	73%	73%
<b>Isothermal CC</b>	69%	76%	80%	77%	73%	80%
<b>James Sprunt CC</b>	70%	73%	70%	74%	69%	65%
<b>Johnston CC</b>	52%	55%	53%	55%	65%	62%
<b>Lenoir CC</b>	79%	81%	78%	79%	81%	81%
<b>Martin CC</b>	80%	78%	73%	73%	64%	60%
<b>Mayland CC</b>	75%	63%	78%	66%	67%	66%
<b>McDowell TCC</b>	68%	69%	67%	71%	62%	66%
<b>Mitchell CC</b>	74%	69%	67%	68%	67%	71%
<b>Montgomery CC</b>	72%	71%	66%	70%	66%	67%
<b>Nash CC</b>	72%	71%	74%	73%	68%*	71%
<b>Pamlico CC</b>	51%	58%	52%	52%	59%	49%
<b>Piedmont CC</b>	64%	57%	61%	60%	61%	56%
<b>Pitt CC</b>	75%	78%	73%	Data not available**	77%	77%
<b>Randolph CC</b>	74%	81%	76%	76%	75%	80%
<b>Richmond CC</b>	77%	72%	70%	69%	75%	74%
<b>Roanoke-Chowan CC</b>	72%	74%	71%	70%	69%	59%
<b>Robeson CC</b>	58%	60%	63%	62%	65%	66%
<b>Rockingham CC</b>	79%	80%	76%	75%	76%	76%
<b>Rowan-Cabarrus CC</b>	70%	72 %	73%	73%	69%	71%
<b>Sampson CC</b>	72%	78%	75%	71%	79%	65%
<b>Sandhills CC</b>	73%	77%	77 %	76%	75%	76%

<b>South Piedmont CC</b>	67%	73%	68%	69%	66%	73%
<b>Southeastern CC</b>	69%	66%	70%	70%	72%	72%
<b>Southwestern CC</b>	77%	74%	73%	72%	70%	70%
<b>Stanly CC</b>	67%	68%	70%	63%	63%	58%
<b>Surry CC</b>	81%	78%	81%	78%	82%	77%
<b>Tri-County CC</b>	66%	70%	66%	56%	71%	70%
<b>Vance-Granville CC</b>	69%	73%	69%	69%	71%	69%
<b>Wake TCC</b>	74%	71%	73%	69%	72%	71%
<b>Wayne CC</b>	76%	76%	78%	75%	74%	77%
<b>Western Piedmont CC</b>	75%	75%	74%	75%	76%	78%
<b>Wilkes CC</b>	73%	71%	73%	71%	80%	74%
<b>Wilson CC</b>	75%	73%	81%	75%	74%	70%
<b>System Total</b>	<b>71%</b>	<b>72%</b>	<b>72%</b>	<b>71%</b>	<b>71%</b>	<b>72%</b>

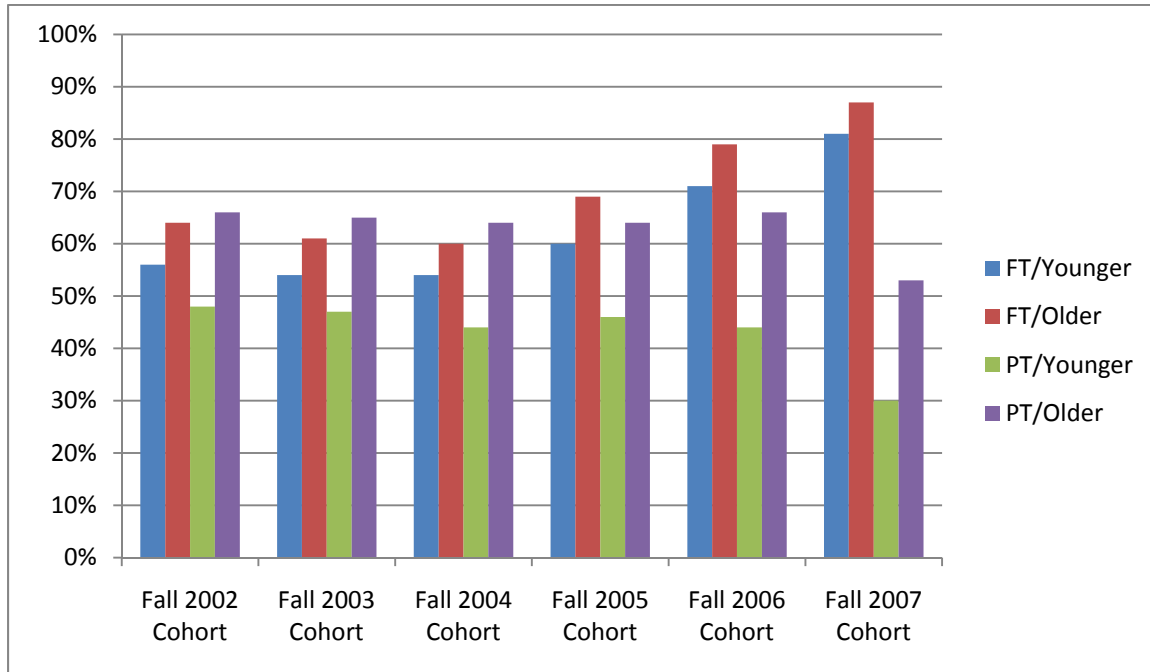
\*Incomplete data; not a true reflection of decline or increase. \*\*Data not available due to CIS issue.

## B. Passed 80% or more of courses attempted

**Table 3-1. Passed 80% or more of courses attempted by attendance status and age group**

	<b>FT/Younger</b>	<b>FT/Older</b>	<b>PT/Younger</b>	<b>PT/Older</b>	<b>Total</b>
<b>Fall 2002 Cohort</b>	56%	64%	48%	66%	59%
<b>Fall 2003 Cohort</b>	54%	61%	47%	65%	57%
<b>Fall 2004 Cohort</b>	54%	60%	44%	64%	56%
<b>Fall 2005 Cohort</b>	60%	69%	46%	64%	59%
<b>Fall 2006 Cohort</b>	71%	79%	44%	66%	62%
<b>Fall 2007 Cohort</b>	81%	87%	30%	53%	53%

**Figure 3. Passed 80% or more of courses attempted by attendance status and age group**



**Table 3-2. Passed 80% or more of courses attempted by college (Percentage of the total cohort)**

College	Fall '02 Cohort	Fall '03 Cohort	Fall '04 Cohort	Fall '05 Cohort	Fall '06 Cohort	Fall '07 Cohort
Alamance CC	60%	64%	55%	60%	57%	55%
AB Tech CC	63%	57%	53%	57%	52%	52%
Beaufort CCC	75%	76%	76%	75%	72%	57%*
Bladen CC	50%	43%	46%	37%	35%	41%
Blue Ridge CC	61%	56%	56%	85%	76%	69%
Brunswick CC	67%	61%	59%	64%	71%*	48%*
Caldwell CC & TI	51%	54%	56%	55%	56%	54%
Cape Fear CC	56%	53%	52%	62%	62%	50%*
Carteret CC	59%	56%	56%	79%*	78%*	59%
Catawba Valley CC	82%	84%	59%	58%	52%	52%

<b>Central Carolina CC</b>	63%	64%	69%	65%	66%	57%*
<b>Central Piedmont CC</b>	74%	72%	70%	70%	67%*	62%*
<b>Cleveland CC</b>	41%	50%	42%	45%	40%	57%
<b>Coastal Carolina CC</b>	61%	62%	56%	58%	62%	58%
<b>COA</b>	43%	35%	32%	65%	55%	57%
<b>Craven CC</b>	60%	63%	60%	58%	56%	58%
<b>Davidson County CC</b>	52%	55%	51%	68%	56%	55%
<b>Durham TCC</b>	53%	52%	44%	49%	44%	46%
<b>Edgecombe CC</b>	52%	50%	50%	44%	56%	48%
<b>Fayetteville TCC</b>	53%	50%	52%	54%	55%	Data not available**
<b>Forsyth TCC</b>	56%	55 %	54%	53%	76%*	54%
<b>Gaston College</b>	58%	57%	59%	59%	70%*	57%
<b>Guilford TCC</b>	73%	72%	69%	68%	66%	46%*
<b>Halifax CC</b>	33%	31%	29%	26%	21%	46%
<b>Haywood CC</b>	58%	57%	53%	63%	59%	57%
<b>Isothermal CC</b>	54%	54%	54%	51%	62%*	54%
<b>James Sprunt CC</b>	55%	60%	53%	60%	Data not available**	59%
<b>Johnston CC</b>	68%	64%	72%	68%	76%	63%
<b>Lenoir CC</b>	64%	55%	49%	51%	86%*	51%
<b>Martin CC</b>	52%	51%	53%	45%	43%	54%
<b>Mayland CC</b>	86%	83%	84%	83%	84%	82%
<b>McDowell TCC</b>	67%	65%	64%	67%	57%*	65%
<b>Mitchell CC</b>	33%	36%	41%	63%	54%	60%
<b>Montgomery CC</b>	42%	44%	46%	47%	52%	54%

<b>Nash CC</b>	50%	41%	45%	44%	70%*	43%
<b>Pamlico CC</b>	65%	67%	70%	61%	72%	71%
<b>Piedmont CC</b>	69%	63%	66%	67%	79%*	68%
<b>Pitt CC</b>	75%	72%	70%	83%	65%	50%*
<b>Randolph CC</b>	55%	54%	53%	73%*	72%*	56%
<b>Richmond CC</b>	44%	40%	41%	42%	74%*	54%
<b>Roanoke-Chowan CC</b>	58%	49%	53%	53%	62%*	55%
<b>Robeson CC</b>	57%	54%	54%	48%	44%	44%
<b>Rockingham CC</b>	47%	47%	51%	74%*	72%*	46%
<b>Rowan-Cabarrus CC</b>	49%	54%	48%	78%*	66%*	51%
<b>Sampson CC</b>	31%*	24%*	24%*	28%*	61%	60%
<b>Sandhills CC</b>	60%	55%	53%	53%	57%	55%
<b>South Piedmont CC</b>	74%	77%	63%	68%	62%	59%
<b>Southeastern CC</b>	51%	51%	47%	48%	49%	44%
<b>Southwestern CC</b>	41%	44%	43%	52%	41%	52%
<b>Stanly CC</b>	52%	54%	51%	49%	70%*	53%
<b>Surry CC</b>	69%	68%	61%	61%	66%	63%
<b>Tri-County CC</b>	58%	57%	65%	52%	48%	66%
<b>Vance-Granville CC</b>	33%*	35%*	30%*	35%*	30%*	56%
<b>Wake TCC</b>	49%	50%	51%	47%	74%*	45%
<b>Wayne CC</b>	71%	60%	58%	63%	58%	54%
<b>Western Piedmont CC</b>	62%	55%	54%	91%*	86%*	56%
<b>Wilkes CC</b>	56%	55%	53%	51%	57%	56%
<b>Wilson CC</b>	51%	51%	53%	60%	40%	39%

<b>System Total</b>	<b>59%</b>	<b>57%</b>	<b>56%</b>	<b>59%</b>	<b>62%*</b>	<b>53%*</b>
---------------------	------------	------------	------------	------------	-------------	-------------

\*Incomplete data; not a true reflection of decline or increase. \*\*Data not available due to CIS issue.

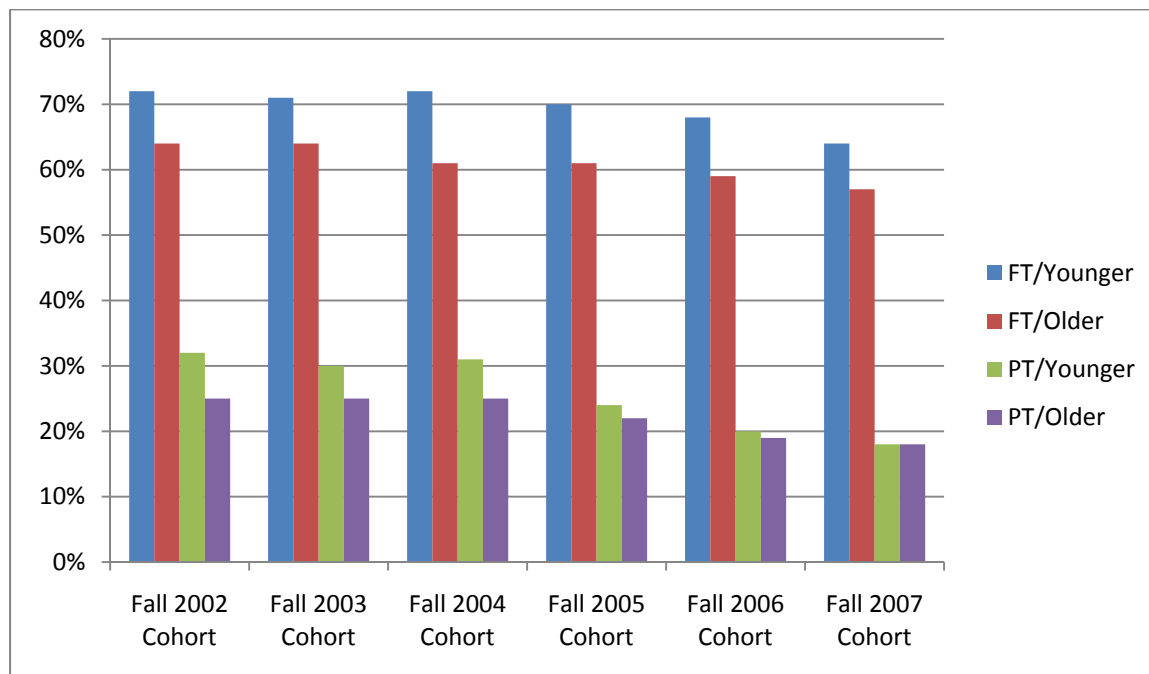
**C. Achieved one-year credit hour milestones: Earned 24+ for FT/ Earned 18+ for PT**

**Table 4-1. Achieved one-year credit hour milestones by attendance status and age group**

	<b>FT/Younger</b>	<b>FT/Older</b>	<b>PT/Younger</b>	<b>PT/Older</b>	<b>Total</b>
<b>Fall 2002 Cohort</b>	72%	64%	32%	25%	51%
<b>Fall 2003 Cohort</b>	71%	64%	30%	25%	51%
<b>Fall 2004 Cohort</b>	72%	61%	31%	25%	51%
<b>Fall 2005 Cohort</b>	70%	61%	24%	22%	44%
<b>Fall 2006 Cohort</b>	68%*	59%*	20%*	19%*	36%*
<b>Fall 2007 Cohort</b>	64%*	57%*	18%*	18%*	31%*

\*Incomplete data due to CIS issues; not a true reflection of decline or increase.

**Figure 4. Achieved one-year credit hour milestones by attendance status and age group**



**Table 4-2. Achieved one-year credit hour milestones by college (Percentage of the total cohort)**

<b>College</b>	<b>Fall '02 Cohort</b>	<b>Fall '03 Cohort</b>	<b>Fall '04 Cohort</b>	<b>Fall '05 Cohort</b>	<b>Fall '06 Cohort</b>
<b>Alamance CC</b>	47%	54%	54%	49%	53%
<b>AB Tech CC</b>	48%	51%	55%	48%	33%
<b>Beaufort CCC</b>	47%	50%	54%	47%	37%*
<b>Bladen CC</b>	46%	53%	55%	46%	50%
<b>Blue Ridge CC</b>	54%	55%	55%	54%	36%
<b>Brunswick CC</b>	48%	56%	47%	48%	31%
<b>Caldwell CC &amp; TI</b>	30%	34%	36%	30%	33%
<b>Cape Fear CC</b>	58%	55%	57%	58%	28%
<b>Carteret CC</b>	52%	54%	50%	52%	39%
<b>Catawba Valley CC</b>	42%	44%	43%	42%	38%
<b>Central Carolina CC</b>	45%	47%	36%	45%	45%
<b>Central Piedmont CC</b>	60%	56%	59%	60%	Data not available**
<b>Cleveland CC</b>	52%	60%	48%	52%	48%
<b>Coastal Carolina CC</b>	48%	51%	50%	48%	49%
<b>COA</b>	50%	56%	61%	50%	34%
<b>Craven CC</b>	50%	44%	42%	50%	47%
<b>Davidson County CC</b>	52%	54%	49%	52%	Data not available**
<b>Durham TCC</b>	51%	39%	46%	51%	52%
<b>Edgecombe CC</b>	56%	45%	56%	56%	24%
<b>Fayetteville TCC</b>	58%	61%	61%	58%	21%
<b>Forsyth TCC</b>	55%	53%	55%	55%	Data not available**
<b>Gaston</b>	53%	55%	53%	53%	Data not

<b>College</b>					available**
<b>Guilford TCC</b>	29%	24%	24%	29%	25%
<b>Halifax CC</b>	57%	55%	64%	57%	60%
<b>Haywood CC</b>	63%	61%	59%	63%	41%
<b>Isothermal CC</b>	56%	67%	68%	56%	34%
<b>James Sprunt CC</b>	56%	64%	61%	56%	41%
<b>Johnston CC</b>	42%	44%	39%	42%	33%
<b>Lenoir CC</b>	72%	72%	68%	72%	45%
<b>Martin CC</b>	63%	70%	69%	63%	51%
<b>Mayland CC</b>	38%	25%	46%	38%	50%
<b>McDowell TCC</b>	55%	55%	60%	55%	53%
<b>Mitchell CC</b>	57%	52%	52%	57%	31%
<b>Montgomery CC</b>	56%	35%	49%	56%	51%
<b>Nash CC</b>	45%	54%	53%	45%	Data not available**
<b>Pamlico CC</b>	46%	49%	44%	43%	53%
<b>Piedmont CC</b>	86%	47%	49%	48%	37%
<b>Pitt CC</b>	39%	38%	39%	Data not available**	40%
<b>Randolph CC</b>	59%	64%	59%	37%	42%
<b>Richmond CC</b>	59%	58%	57%	54%	33%
<b>Roanoke-Chowan CC</b>	62%	53%	54%	49%	43%
<b>Robeson CC</b>	47%	48%	51%	26%	26%
<b>Rockingham CC</b>	60%	61%	60%	34%	31%
<b>Rowan-Cabarrus CC</b>	52%	60%	58%	29%	25%
<b>Sampson CC</b>	55%	58%	62%	56%	Data not available**

<b>Sandhills CC</b>	61%	63%	65%	65%	40%
<b>South Piedmont CC</b>	35%	37%	32%	35%	31%
<b>Southeastern CC</b>	62%	53%	58%	55%	62%
<b>Southwestern CC</b>	60%	60%	59%	Data not available**	56%
<b>Stanly CC</b>	60%	58%	59%	52%	37%
<b>Surry CC</b>	66%	65%	68%	66%	74%
<b>Tri-County CC</b>	45%	51%	48%	35%	50%
<b>Vance- Granville CC</b>	52%	54%	53%	52%	51%
<b>Wake TCC</b>	53%	49%	52%	48%	Data not available**
<b>Wayne CC</b>	44%	43%	38%	43%	38%
<b>Western Piedmont CC</b>	59%	60%	58%	45%	32%
<b>Wilkes CC</b>	62%	61%	64%	65%	43%
<b>Wilson CC</b>	62%	62%	68%	38%	37%
<b>System Total</b>	<b>51%</b>	<b>51%</b>	<b>51%</b>	<b>44%</b>	<b>36%*</b>

\*Incomplete data due to CIS conversion issues; not a true reflection of decline or increase.

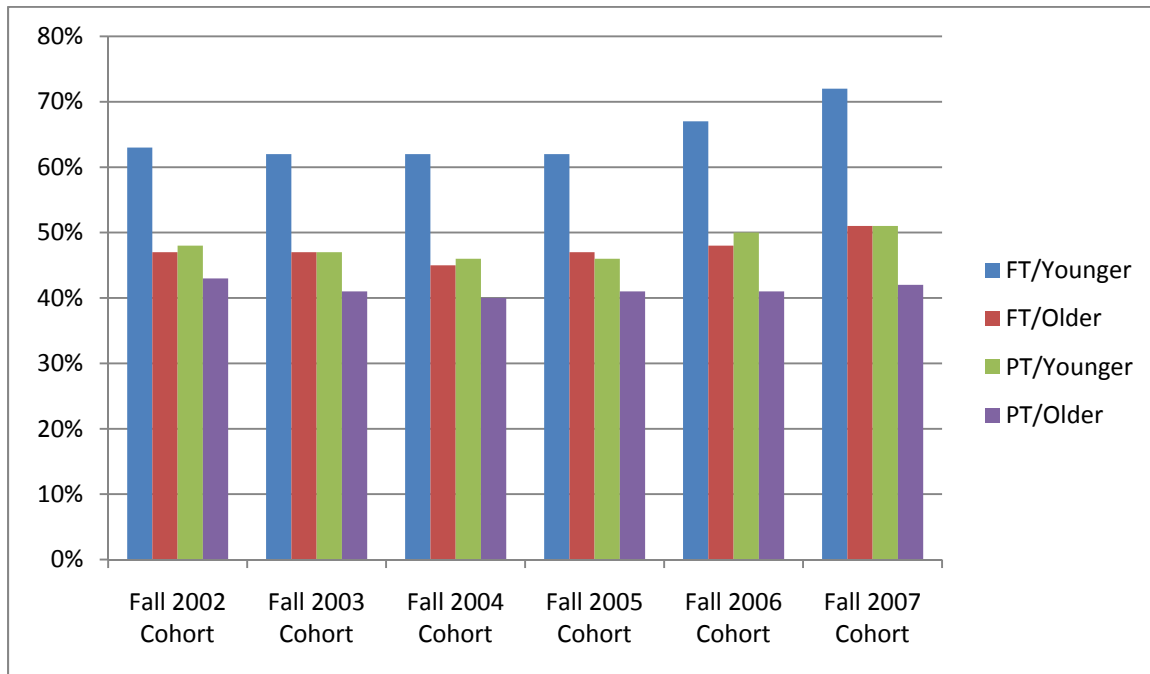
### 3. Second-Year Intermediate Milestones

#### A. Persisted fall to fall

Table 5-1. Persisted fall to fall by attendance status and age group

	FT/Younger	FT/Older	PT/Younger	PT/Older	Total
<b>Fall 2002 Cohort</b>	63%	47%	48%	43%	52%
<b>Fall 2003 Cohort</b>	62%	47%	47%	41%	51%
<b>Fall 2004 Cohort</b>	62%	45%	46%	40%	50%
<b>Fall 2005 Cohort</b>	62%	47%	46%	41%	50%
<b>Fall 2006 Cohort</b>	67%	48%	50%	41%	51%
<b>Fall 2007 Cohort</b>	72%	51%	51%	42%	52%

Figure 5. Persisted fall to fall by attendance status and age group



**Table 5-2. Persisted fall to fall by college (Persistence rate of the total cohort in each year)**

<b>College</b>	<b>Fall '02 Cohort</b>	<b>Fall '03 Cohort</b>	<b>Fall '04 Cohort</b>	<b>Fall '05 Cohort</b>	<b>Fall '06 Cohort</b>	<b>Fall '07 Cohort</b>
<b>Alamance CC</b>	51%	53%	53%	49%	48%	55%
<b>AB Tech CC</b>	48%	49%	49%	54%	50%	53%
<b>Beaufort CCC</b>	54%	54%	50%	48%	57%	51%
<b>Bladen CC</b>	52%	50%	51%	49%	42%	52%
<b>Blue Ridge CC</b>	47%	50%	49%	46%	45%	50%
<b>Brunswick CC</b>	49%	45%	41%	47%	49%	54%
<b>Caldwell CC &amp; TI</b>	48%	50%	52%	47%	51%	56%
<b>Cape Fear CC</b>	54%	51%	55%	51%	54%	53%
<b>Carteret CC</b>	45%	47%	51%	50%	50%	59%
<b>Catawba Valley CC</b>	55%	57%	53%	54%	54%	52%
<b>Central Carolina CC</b>	46%	45%	43%	43%	45%	48%
<b>Central Piedmont CC</b>	57%	56%	56%	55%	Data not available**	53%
<b>Cleveland CC</b>	45%	53%	42%	41%	37%	48%
<b>Coastal Carolina CC</b>	45%	44%	43%	46%	45%	48%
<b>COA</b>	47%	44%	49%	43%	44%	49%
<b>Craven CC</b>	50%	46%	46%	50%	48%	47%
<b>Davidson County CC</b>	54%	54%	47%	51%	55%	50%
<b>Durham TCC</b>	55%	51%	50%	49%	50%	41%
<b>Edgecombe CC</b>	46%	46%	46%	46%	45%	58%
<b>Fayetteville TCC</b>	52%	50%	46%	53%	54%	53%
<b>Forsyth TCC</b>	59%	52%	53%	54%	54%	54%
<b>Gaston College</b>	48%	50%	50%	51%	51%	55%

<b>Guilford TCC</b>	54%	53%	53%	51%	56%	55%
<b>Halifax CC</b>	45%	41%	47%	47%	40%	52%
<b>Haywood CC</b>	55%	57%	51%	51%	55%	52%
<b>Isothermal CC</b>	48%	61%	56%	52%	49%	55%
<b>James Sprunt CC</b>	46%	48%	49%	48%	41%	38%
<b>Johnston CC</b>	38%	36%	38%	42%	46%	47%
<b>Lenoir CC</b>	61%	66%	59%	56%	62%	58%
<b>Martin CC</b>	58%	61%	55%	46%	41%	48%
<b>Mayland CC</b>	41%	30%	33%	32%	36%	33%
<b>McDowell TCC</b>	52%	42%	47%	49%	40%	46%
<b>Mitchell CC</b>	55%	51%	48%	47%	49%	55%
<b>Montgomery CC</b>	48%	35%	47%	49%	54%	45%
<b>Nash CC</b>	53%	51%	48%	52%	54%	55%
<b>Pamlico CC</b>	37%	44%	36%	34%	41%	37%
<b>Piedmont CC</b>	42%	35%	37%	35%	40%	28%
<b>Pitt CC</b>	55%	57%	55%	Data not available**	56%	59%
<b>Randolph CC</b>	54%	54%	56%	54%	57%	59%
<b>Richmond CC</b>	59%	51%	48%	44%	51%	53%
<b>Roanoke-Chowan CC</b>	47%	43%	41%	36%	45%	35%
<b>Robeson CC</b>	43%	41%	43%	45%	45%	47%
<b>Rockingham CC</b>	58%	63%	57%	53%	59%	54%
<b>Rowan-Cabarrus CC</b>	50%	53%	51%	52%	53%	52%
<b>Sampson CC</b>	52%	61%	53%	49%	55%	55%
<b>Sandhills CC</b>	60%	59%	57%	56%	56%	57%

<b>South Piedmont CC</b>	49%	54%	45%	44%	50%	52%
<b>Southeastern CC</b>	46%	44%	43%	42%	47%	52%
<b>Southwestern CC</b>	52%	50%	52%	Data not available**	54%	54%
<b>Stanly CC</b>	44%	50%	46%	46%	51%	44%
<b>Surry CC</b>	62%	58%	62%	58%	67%	61%
<b>Tri-County CC</b>	42%	48%	44%	43%	43%	46%
<b>Vance-Granville CC</b>	50%	50%	50%	46%	48%	48%
<b>Wake TCC</b>	53%	51%	53%	48%	53%	53%
<b>Wayne CC</b>	57%	56%	54%	54%	56%	55%
<b>Western Piedmont CC</b>	61%	58%	56%	60%	59%	60%
<b>Wilkes CC</b>	54%	52%	52%	48%	58%	56%
<b>Wilson CC</b>	52%	44%	47%	44%	48%	46%
<b>System Total</b>	<b>52%</b>	<b>51%</b>	<b>50%</b>	<b>50%</b>	<b>51%</b>	<b>52%</b>

\*\*Data not available due to CIS conversion issues.

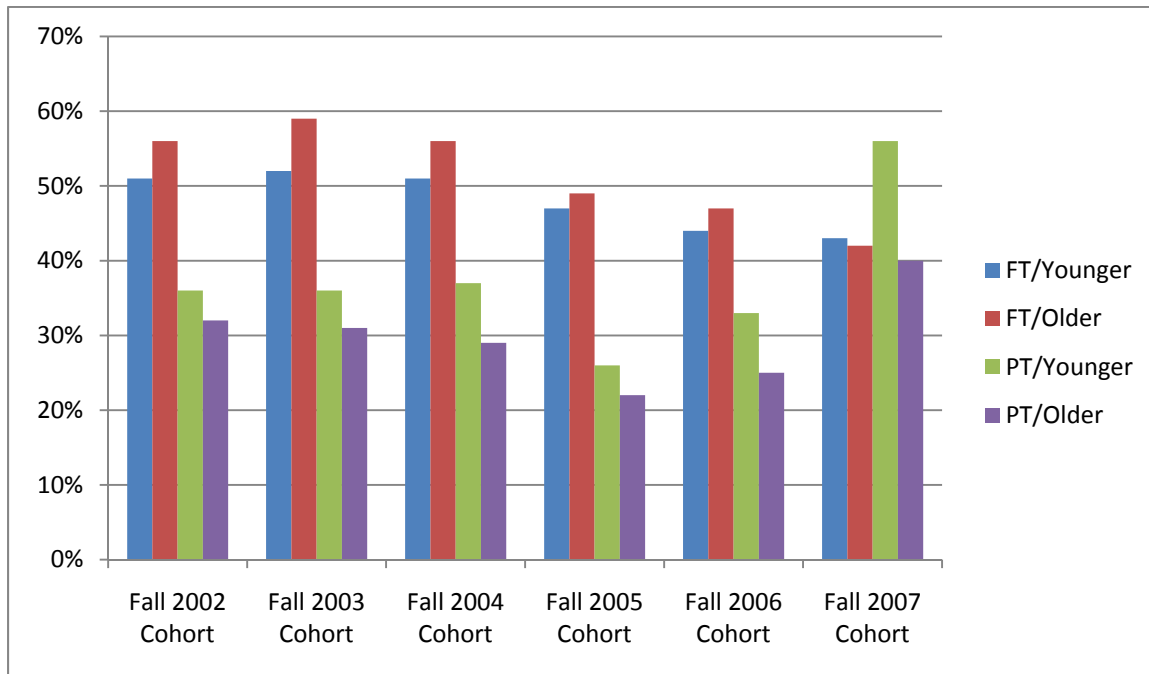
#### B. Enrolled in developmental education math by year 2 (Associate degree-seeking students)

Table 6-1. Enrolled in developmental education math by year 2 by attendance status and age group

	<b>FT/Younger</b>	<b>FT/Older</b>	<b>PT/Younger</b>	<b>PT/Older</b>	<b>Total</b>
<b>Fall 2002 Cohort</b>	51%	56%	36%	32%	45%
<b>Fall 2003 Cohort</b>	52%	59%	36%	31%	46%
<b>Fall 2004 Cohort</b>	51%	56%	37%	29%	44%
<b>Fall 2005 Cohort</b>	47%	49%	26%	22%	35%*
<b>Fall 2006 Cohort</b>	44%	47%	33%	25%	35%*
<b>Fall 2007 Cohort</b>	43%	42%	56%	40%	48%

\*Incomplete data due to CIS issues; not a true reflection of decline or increase.

**Figure 6. Enrolled in developmental education math by year 2 by attendance status and age group**



**Table 6-2. Enrolled in developmental education math by year 2 by college (Percentage of the total cohort in each college)**

College	Fall '02 Cohort	Fall '03 Cohort	Fall '04 Cohort	Fall '05 Cohort	Fall '06 Cohort	Fall '07 Cohort
Alamance CC	40%	45%	42%	43%	42%	46%
AB Tech CC	43%	44%	46%	39%	43%	39%
Beaufort CCC	37%	44%	31%	33%	37%	42%
Bladen CC	41%	45%	49%	60%	56%	57%
Blue Ridge CC	63%	53%	53%	38%	42%	48%
Brunswick CC	60%	56%	55%	51%	45%	64%
Caldwell CC & TI	38%	41%	38%	38%	39%	37%
Cape Fear CC	45%	41%	36%	Data not available**	Data not available**	38%
Carteret CC	55%	49%	46%	33%	36%	47%

<b>Catawba Valley CC</b>	47%	58%	66%	62%	65%	64%
<b>Central Carolina CC</b>	38%	29%	29%	27%	25%	35%
<b>Central Piedmont CC</b>	45%	47%	46%	45%	Data not available**	40%
<b>Cleveland CC</b>	54%	57%	58%	50%	44%	44%
<b>Coastal Carolina CC</b>	43%	46%	46%	46%	44%	39%
<b>COA</b>	57%	57%	68%	56%	63%	64%
<b>Craven CC</b>	48%	46%	43%	46%	45%	40%
<b>Davidson County CC</b>	44%	39%	39%	26%	41%	36%
<b>Durham TCC</b>	52%	48%	57%	56%	55%	49%
<b>Edgecombe CC</b>	55%	64%	61%	56%	42%	51%
<b>Fayetteville TCC</b>	60%	60%	54%	Data not available**	Data not available**	54%
<b>Forsyth TCC</b>	36%	38%	40%	40%	32%*	37%
<b>Gaston College</b>	55%	54%	54%	58%	49%*	60%
<b>Guilford TCC</b>	Data not available**	Data not available**	Data not available**	Data not available**	Data not available**	52%
<b>Halifax CC</b>	62%	69%	68%	68%	71%	67%
<b>Haywood CC</b>	47%	43%	44%	43%	30%*	31%
<b>Isothermal CC</b>	34%	39%	36%	42%	51%	63%
<b>James Sprunt CC</b>	54%	47%	55%	60%	37%*	62%
<b>Johnston CC</b>	40%	36%	40%	27%*	Data not available**	41%
<b>Lenoir CC</b>	49%	50%	44%	41%	32%*	52%
<b>Martin CC</b>	42%	44%	49%	51%	35%*	34%*
<b>Mayland CC</b>	Data not available**	Data not available**	Data not available**	Data not available**	Data not available**	41%
<b>McDowell TCC</b>	57%	51%	51%	50%	48%	43%

<b>Mitchell CC</b>	47%	51%	44%	43%	38%	42%
<b>Montgomery CC</b>	48%	46%	54%	45%	44%	35%
<b>Nash CC</b>	56%	63%	65%	66%	50%*	64%
<b>Pamlico CC</b>	45%	70%	49%	65%	66%	Data not available**
<b>Piedmont CC</b>	36%	50%	46%	54%	50%	51%
<b>Pitt CC</b>	51%	48%	50%	Data not available**	48%	54%
<b>Randolph CC</b>	35%	38%	31%	Data not available**	Data not available**	51%
<b>Richmond CC</b>	53%	51%	46%	53%	48%	52%
<b>Roanoke-Chowan CC</b>	72%	68%	72%	69%	70%	57%
<b>Robeson CC</b>	74%	74%	74%	78%	77%	73%
<b>Rockingham CC</b>	70%	74%	63%	Data not available**	Data not available**	67%
<b>Rowan-Cabarrus CC</b>	55%	58%	56%	Data not available**	Data not available**	55%
<b>Sampson CC</b>	62%	60%	63%	58%	56%	71%
<b>Sandhills CC</b>	58%	54%	57%	50%	47%	45%
<b>South Piedmont CC</b>	30%	24%	22%	39%	50%	54%
<b>Southeastern CC</b>	70%	69%	65%	67%	68%	68%
<b>Southwestern CC</b>	45%	43%	39%	Data not available**	37%	35%
<b>Stanly CC</b>	36%	34%	38%	37%	27%*	32%
<b>Surry CC</b>	48%	55%	55%	51%	42%	43%
<b>Tri-County CC</b>	48%	44%	41%	43%	38%	27%*
<b>Vance-Granville CC</b>	55%	59%	60%	55%	57%	46%
<b>Wake TCC</b>	36%	39%	42%	42%	Data not available**	45%
<b>Wayne CC</b>	52%	59%	62%	57%	57%	53%
<b>Western</b>	50%	57%	46%	Data not	Data not	60%

<b>Piedmont CC</b>				available**	available**	
<b>Wilkes CC</b>	45%	44%	43%	47%	55%	60%
<b>Wilson CC</b>	51%	52%	44%	37%*	52%	62%
<b>System Total</b>	<b>45%</b>	<b>46%</b>	<b>44%</b>	<b>35%*</b>	<b>35%*</b>	<b>48%</b>

\*Incomplete data; not a true reflection of decline or increase. \*\*Data not available due to CIS issues.

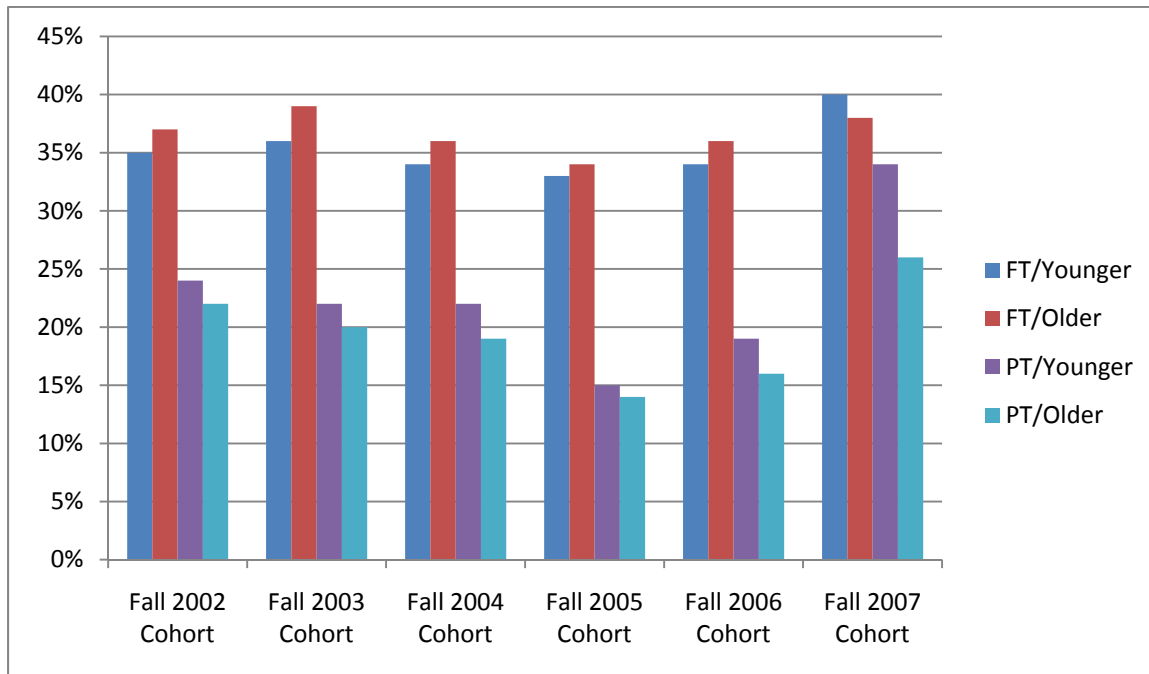
### C. Passed developmental education math by year 2 (Associate degree-seeking students)

**Table 7-1. Passed developmental education math by year 2 by attendance status and age group**

	<b>FT/Younger</b>	<b>FT/Older</b>	<b>PT/Younger</b>	<b>PT/Older</b>	<b>Total</b>
<b>Fall 2002 Cohort</b>	35%	37%	24%	22%	30%
<b>Fall 2003 Cohort</b>	36%	39%	22%	20%	30%
<b>Fall 2004 Cohort</b>	34%	36%	22%	19%	29%
<b>Fall 2005 Cohort</b>	33%	34%	15%	14%	23%*
<b>Fall 2006 Cohort</b>	34%	36%	19%	16%	23%*
<b>Fall 2007 Cohort</b>	40%	38%	34%	26%	33%

\*Incomplete data due to CIS conversion issues; not a true reflection of decline or increase.

**Figure 7. Passed developmental education math by year 2 by attendance status and age group**



**Table 7-2. Passed developmental education math by year 2 by college (Percentage of the total cohort)**

College	Fall '02 Cohort	Fall '03 Cohort	Fall '04 Cohort	Fall '05 Cohort	Fall '06 Cohort	Fall '07 Cohort
Alamance CC	33%	33%	26%	33%	33%	37%
AB Tech CC	32%	34%	33%	27%	30%	29%
Beaufort CCC	31%	36%	23%	25%	28%	24%
Bladen CC	28%	32%	38%	41%	41%	47%
Blue Ridge CC	50%	44%	40%	37%	38%	45%
Brunswick CC	48%	40%	41%	46%	38%	51%
Caldwell CC & TI	27%	30%	28%	31%	30%	27%
Cape Fear CC	36%	33%	25%	Data not available**	Data not available**	28%
Carteret CC	43%	36%	37%	31%	33%	40%

<b>Catawba Valley CC</b>	46%	54%	50%	46%	47%	45%
<b>Central Carolina CC</b>	26%	18%	19%	18%	15%	20%
<b>Central Piedmont CC</b>	39%	40%	37%	36%	Data not available**	29%*
<b>Cleveland CC</b>	Data not available**	Data not available**	Data not available**	Data not available**	Data not available**	34%
<b>Coastal Carolina CC</b>	33%	36%	33%	37%	33%	Data not available**
<b>COA</b>	Data not available**	Data not available**	Data not available**	44%	48%	46%
<b>Craven CC</b>	40%	39%	35%	38%	37%	31%
<b>Davidson County CC</b>	Data not available**	Data not available**	Data not available**	Data not available**	Data not available**	Data not available**
<b>Durham TCC</b>	39%	33%	34%	35%	35%	24%*
<b>Edgecombe CC</b>	41%	41%	40%	38%	30%*	33%
<b>Fayetteville TCC</b>	45%	43%	37%	Data not available**	Data not available**	33%
<b>Forsyth TCC</b>	29%	30%	31%	31%	28%	30%
<b>Gaston College</b>	40%	39%	39%	45%	28%*	48%
<b>Guilford TCC</b>	Data not available**	Data not available**	Data not available**	Data not available**	Data not available**	37%
<b>Halifax CC</b>	Data not available**	Data not available**	Data not available**	Data not available**	Data not available**	43%
<b>Haywood CC</b>	29%	27%	25%	27%	17%*	20%*
<b>Isothermal CC</b>	23%	24%	24%	29%	40%	47%
<b>James Sprunt CC</b>	41%	32%	45%	47%	35%	54%
<b>Johnston CC</b>	32%	29%	33%	22%	Data not available**	30%
<b>Lenoir CC</b>	40%	39%	33%	32%	30%	38%
<b>Martin CC</b>	28%	29%	36%	30%	22%	21%
<b>Mayland CC</b>	Data not available**	Data not available**	Data not available**	Data not available**	Data not available**	32%
<b>McDowell TCC</b>	42%	38%	40%	38%	34%	36%
<b>Mitchell CC</b>	Data not	Data not	Data not	28%	23%	35%

	available**	available**	available**			
<b>Montgomery CC</b>	Data not available**	Data not available**	Data not available**	Data not available**	Data not available**	Data not available**
<b>Nash CC</b>	30%	30%	36%	37%	33%	42%
<b>Pamlico CC</b>	37%	61%	38%	49%	53%	Data not available**
<b>Piedmont CC</b>	26%	37%	37%	39%	44%	38%
<b>Pitt CC</b>	45%	43%	43%	Data not available**	40%	40%
<b>Randolph CC</b>	26%	24%	28%	Data not available**	Data not available**	37%
<b>Richmond CC</b>	Data not available**	23%	23%	41%	42%	40%
<b>Roanoke-Chowan CC</b>	67%	58%	62%	58%	55%	51%
<b>Robeson CC</b>	57%	55%	54%	57%	53%	50%
<b>Rockingham CC</b>	40%	51%	41%	Data not available**	Data not available**	50%
<b>Rowan-Cabarrus CC</b>	32%	37%	33%	Data not available**	Data not available**	38%
<b>Sampson CC</b>	Data not available**	Data not available**	Data not available**	Data not available**	45%	54%
<b>Sandhills CC</b>	45%	39%	40%	35%	38%	33%
<b>South Piedmont CC</b>	23%	20%	14%	30%	39%	46%
<b>Southeastern CC</b>	51%	46%	43%	40%	44%	43%
<b>Southwestern CC</b>	Data not available**	Data not available**	Data not available**	Data not available**	Data not available**	27%
<b>Stanly CC</b>	22%	24%	21%	26%	19%	21%
<b>Surry CC</b>	39%	41%	43%	39%	34%	34%
<b>Tri-County CC</b>	40%	Data not available**	Data not available**	Data not available**	Data not available**	24%
<b>Vance-Granville CC</b>	Data not available**	Data not available**	Data not available**	Data not available**	Data not available**	38%
<b>Wake TCC</b>	26%	28%	29%	24%	Data not available**	29%
<b>Wayne CC</b>	46%	45%	46%	44%	44%	39%
<b>Western Piedmont CC</b>	40%	45%	36%	Data not available**	Data not available**	36%

<b>Wilkes CC</b>	30%	29%	29%	30%	38%	44%
<b>Wilson CC</b>	31%	36%	31%	26%	35%	43%
<b>System Total</b>	<b>30%</b>	<b>30%</b>	<b>29%</b>	<b>23%*</b>	<b>23%*</b>	<b>33%</b>

\*Incomplete data; not a true reflection of decline or increase\*\*Data not available due to CIS conversion issues.

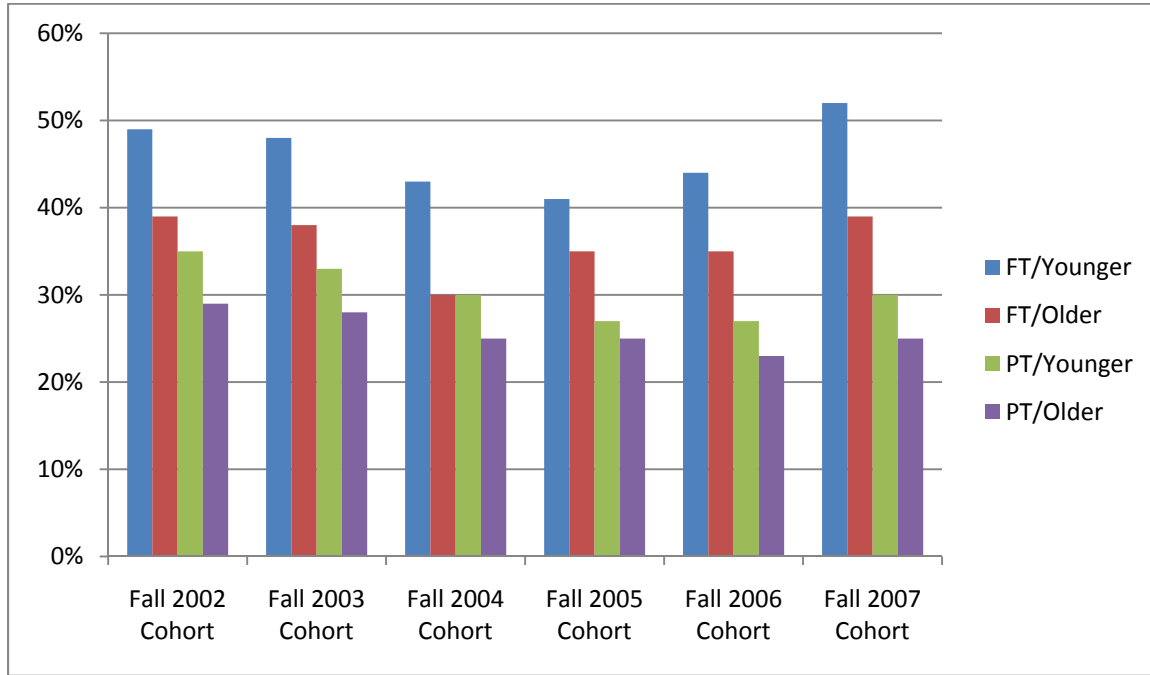
**D. Achieved the two-year credit hour milestones: Earned 42+ for FT/Earned 24+ for PT**

**Table 8-1. Achieved the two-year credit hour milestones by attendance status and age group**

	<b>FT/Younger</b>	<b>FT/Older</b>	<b>PT/Younger</b>	<b>PT/Older</b>	<b>Total</b>
<b>Fall 2002 Cohort</b>	49%	39%	35%	29%	40%
<b>Fall 2003 Cohort</b>	48%	38%	33%	28%	39%
<b>Fall 2004 Cohort</b>	43%	30%	30%	25%	34%
<b>Fall 2005 Cohort</b>	41%	35%	27%	25%	31%*
<b>Fall 2006 Cohort</b>	44%	35%	27%	23%	31%*
<b>Fall 2007 Cohort</b>	52%	39%	30%	25%	33%*

\*Incomplete data; not a true reflection of decline or increase.

**Figure 8. Achieved the two-year credit hour milestones by attendance status and age group**



**Table 8-2. Achieved the two-year credit hour milestones by college (Percentage of the total cohort)**

College	Fall '02 Cohort	Fall '03 Cohort	Fall '04 Cohort	Fall '05 Cohort	Fall '06 Cohort
Alamance CC	35%	41%	35%	37%	31%
AB Tech CC	39%	38%	33%	34%	31%
Beaufort CCC	43%	42%	36%	29%	38%
Bladen CC	39%	37%	37%	39%	24%
Blue Ridge CC	36%	39%	29%	30%	28%
Brunswick CC	39%	39%	29%	29%	28%
Caldwell CC & TI	28%	32%	32%	30%	33%
Cape Fear CC	42%	39%	30%	31%	30%
Carteret CC	39%	38%	33%	32%	33%

<b>Catawba Valley CC</b>	39%	38%	34%	36%	34%
<b>Central Carolina CC</b>	34%	32%	30%	35%	27%
<b>Central Piedmont CC</b>	44%	45%	41%	32%*	Data not available**
<b>Cleveland CC</b>	34%	42%	29%	31%	22%
<b>Coastal Carolina CC</b>	34%	37%	31%	37%	28%
<b>COA</b>	36%	36%	29%	25%	27%
<b>Craven CC</b>	39%	36%	34%	40%	28%
<b>Davidson County CC</b>	43%	44%	28%	34%	31%
<b>Durham TCC</b>	41%	36%	33%	36%	25%
<b>Edgecombe CC</b>	39%	34%	31%	26%	23%
<b>Fayetteville TCC</b>	43%	41%	25%	29%	29%
<b>Forsyth TCC</b>	44%	38%	38%	30%	31%
<b>Gaston College</b>	39%	37%	39%	31%	33%
<b>Guilford TCC</b>	30%	27%	26%	26%	28%
<b>Halifax CC</b>	37%	33%	37%	38%	25%
<b>Haywood CC</b>	45%	48%	42%	41%	39%
<b>Isothermal CC</b>	40%	51%	45%	35%	29%
<b>James Sprunt CC</b>	36%	40%	42%	36%	24%
<b>Johnston CC</b>	30%	28%	28%	29%	30%
<b>Lenoir CC</b>	53%	54%	44%	40%	37%
<b>Martin CC</b>	46%	53%	48%	36%	24%
<b>Mayland CC</b>	26%	19%	20%	22%	27%
<b>McDowell TCC</b>	44%	36%	36%	40%	28%
<b>Mitchell CC</b>	43%	41%	32%	29%	29%

<b>Montgomery CC</b>	42%	30%	37%	36%	39%
<b>Nash CC</b>	36%	35%	33%	34%	30%*
<b>Pamlico CC</b>	32%	32%	27%	28%	33%
<b>Piedmont CC</b>	40%	28%	30%	26%	27%
<b>Pitt CC</b>	37%	36%	34%	Data not available**	35%
<b>Randolph CC</b>	46%	46%	34%	36%	38%
<b>Richmond CC</b>	46%	41%	36%	29%	30%
<b>Roanoke-Chowan CC</b>	36%	33%	30%	26%	26%
<b>Robeson CC</b>	32%	30%	21%	24%	25%
<b>Rockingham CC</b>	47%	50%	31%	34%	36%
<b>Rowan-Cabarrus CC</b>	37%	42%	26%	31%	27%
<b>Sampson CC</b>	41%	48%	39%	32%	35%
<b>Sandhills CC</b>	50%	49%	46%	39%	39%
<b>South Piedmont CC</b>	31%	33%	27%	30%	34%
<b>Southeastern CC</b>	39%	38%	36%	32%	28%
<b>Southwestern CC</b>	42%	41%	43%	Data not available**	35%
<b>Stanly CC</b>	38%	42%	36%	31%	34%
<b>Surry CC</b>	51%	49%	52%	51%	54%
<b>Tri-County CC</b>	30%	36%	34%	29%	35%
<b>Vance-Granville CC</b>	39%	42%	35%	35%	26%
<b>Wake TCC</b>	42%	40%	39%	25%*	25%*
<b>Wayne CC</b>	39%	36%	35%	35%	38%
<b>Western Piedmont CC</b>	50%	47%	37%	41%	39%
<b>Wilkes CC</b>	47%	44%	47%	35%	42%

<b>Wilson CC</b>	43%	35%	28%	27%	28%
<b>System Total</b>	<b>40%</b>	<b>39%</b>	<b>34%</b>	<b>31%*</b>	<b>31%*</b>

\*Incomplete data due to CIS conversion issue; not a true reflection of decline or increase\*\*Data not available due to CIS issues.

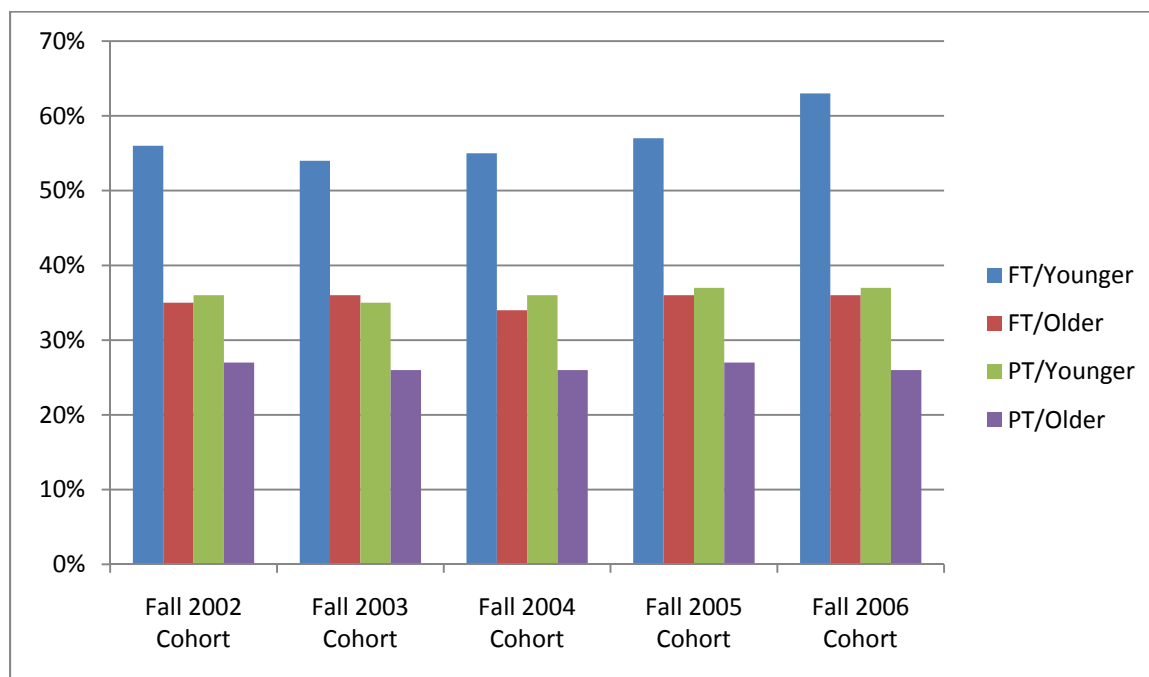
#### 4. Third-Year Intermediate Milestones

##### A. Passed gatekeeper English or higher by year 3

Table 9-1. Passed gatekeeper English or higher by year 3 by attendance status and age group

	<b>FT/Younger</b>	<b>FT/Older</b>	<b>PT/Younger</b>	<b>PT/Older</b>	<b>Total</b>
<b>Fall 2002 Cohort</b>	56%	35%	36%	27%	40%
<b>Fall 2003 Cohort</b>	54%	36%	35%	26%	40%
<b>Fall 2004 Cohort</b>	55%	34%	36%	26%	41%
<b>Fall 2005 Cohort</b>	57%	36%	37%	27%	40%
<b>Fall 2006 Cohort</b>	63%	36%	37%	26%	40%

Figure 9. Passed gatekeeper English or higher by year 3 by attendance status and age group



**Table 9-2. Passed gatekeeper English or higher by year 3 by college (Percentage of the total cohort)**

<b>College</b>	<b>Fall '02 Cohort</b>	<b>Fall '03 Cohort</b>	<b>Fall '04 Cohort</b>	<b>Fall '05 Cohort</b>	<b>Fall '06 Cohort</b>
<b>Alamance CC</b>	41%	44%	42%	41%	41%
<b>AB Tech CC</b>	41%	40%	38%	41%	35%
<b>Beaufort CCC</b>	37%	40%	42%	37%	37%
<b>Bladen CC</b>	31%	29%	33%	36%	32%
<b>Blue Ridge CC</b>	32%	34%	35%	39%	36%
<b>Brunswick CC</b>	44%	41%	45%	41%	39%
<b>Caldwell CC &amp; TI</b>	34%	36%	37%	35%	41%
<b>Cape Fear CC</b>	47%	44%	48%	47%	46%
<b>Carteret CC</b>	39%	41%	38%	42%	47%
<b>Catawba Valley CC</b>	47%	48%	46%	45%	41%
<b>Central Carolina CC</b>	31%	29%	26%	30%	25%
<b>Central Piedmont CC</b>	49%	47%	47%	50%	Data not available**
<b>Cleveland CC</b>	31%	34%	32%	26%	28%
<b>Coastal Carolina CC</b>	43%	46%	47%	52%	51%
<b>COA</b>	40%	39%	43%	39%	41%
<b>Craven CC</b>	45%	42%	46%	46%	50%
<b>Davidson County CC</b>	43%	46%	41%	39%	42%
<b>Durham TCC</b>	38%	28%	31%	34%	29%
<b>Edgecombe CC</b>	26%	26%	27%	25%	26%
<b>Fayetteville TCC</b>	43%	40%	39%	36%	35%
<b>Forsyth TCC</b>	49%	49%	49%	45%	45%
<b>Gaston College</b>	42%	47%	46%	45%	45%

<b>Guilford TCC</b>	41%	44%	43%	42%	41%
<b>Halifax CC</b>	41%	36%	43%	38%	34%
<b>Haywood CC</b>	38%	40%	35%	35%	32%
<b>Isothermal CC</b>	Data not available	16%	25%	38%	39%
<b>James Sprunt CC</b>	33%	33%	37%	38%	33%
<b>Johnston CC</b>	26%	25%	27%	29%	31%
<b>Lenoir CC</b>	49%	44%	40%	41%	43%
<b>Martin CC</b>	35%	40%	39%	29%	30%
<b>Mayland CC</b>	25%	13%	14%	12%	10%
<b>McDowell TCC</b>	37%	31%	31%	34%	30%
<b>Mitchell CC</b>	41%	40%	44%	36%	39%
<b>Montgomery CC</b>	32%	20%	22%	29%	33%
<b>Nash CC</b>	36%	38%	40%	42%	34%*
<b>Pamlico CC</b>	23%	25%	18%	14%	22%
<b>Piedmont CC</b>	26%	20%	22%	21%	22%
<b>Pitt CC</b>	47%	44%	42%	Data not available**	44%
<b>Randolph CC</b>	43%	47%	46%	49%	46%
<b>Richmond CC</b>	45%	38%	38%	34%	40%
<b>Roanoke-Chowan CC</b>	25%	22%	23%	20%	19%
<b>Robeson CC</b>	27%	26%	32%	33%	30%
<b>Rockingham CC</b>	48%	48%	43%	46%	49%
<b>Rowan-Cabarrus CC</b>	40%	44%	45%	43%	47%
<b>Sampson CC</b>	46%	47%	40%	42%	40%
<b>Sandhills CC</b>	43%	45%	43%	44%	41%

<b>South Piedmont CC</b>	24%	24%	27%	24%	31%
<b>Southeastern CC</b>	35%	32%	36%	27%	34%
<b>Southwestern CC</b>	40%	36%	39%	Data not available**	37%
<b>Stanly CC</b>	32%	37%	35%	35%	36%
<b>Surry CC</b>	53%	51%	47%	45%	51%
<b>Tri-County CC</b>	32%	43%	46%	42%	48%
<b>Vance-Granville CC</b>	33%	35%	34%	34%	32%
<b>Wake TCC</b>	40%	38%	40%	37%	41%
<b>Wayne CC</b>	48%	47%	47%	48%	47%
<b>Western Piedmont CC</b>	53%	48%	48%	55%	55%
<b>Wilkes CC</b>	45%	43%	45%	40%	46%
<b>Wilson CC</b>	26%	28%	30%	29%	25%
<b>System Total</b>	<b>40%</b>	<b>40%</b>	<b>41%</b>	<b>40%</b>	<b>40%</b>

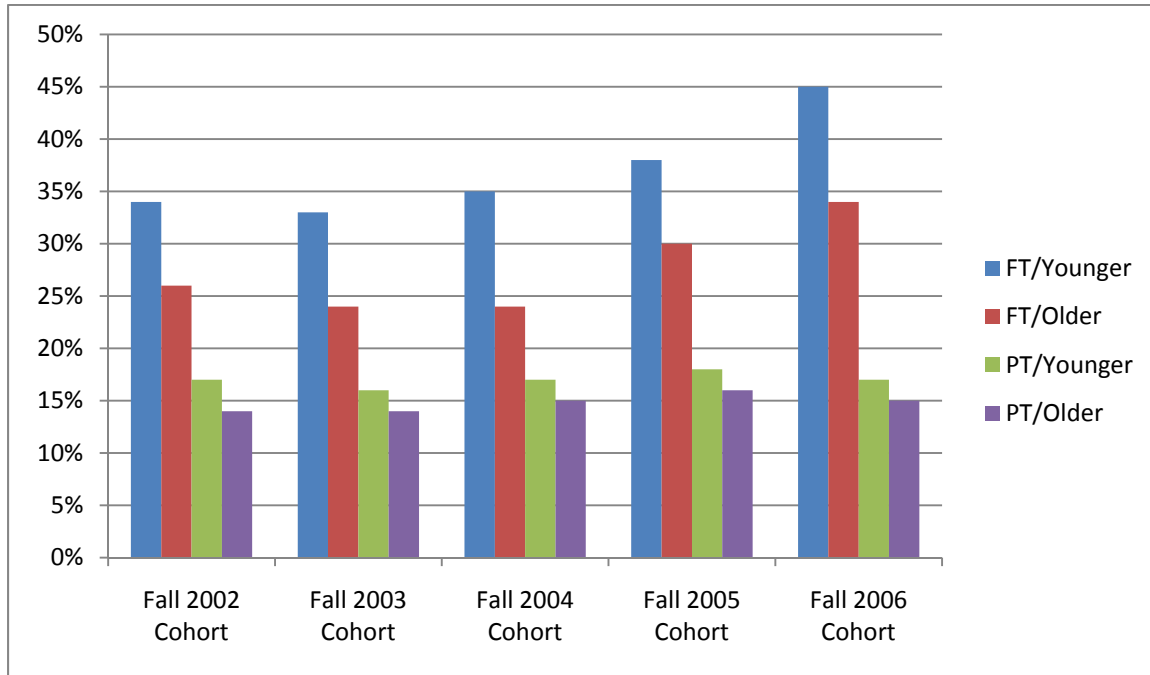
\*Incomplete data; not a true reflection of decline or increase. \*\*Data not available due to CIS issues.

### B. Passed gatekeeper math or higher by year 3 (College Transfer Students Only)

Table 10-1. Passed gatekeeper math or higher by year 3 by attendance status and age group

	<b>FT/Younger</b>	<b>FT/Older</b>	<b>PT/Younger</b>	<b>PT/Older</b>	<b>Total</b>
<b>Fall 2002 Cohort</b>	34%	26%	17%	14%	26%
<b>Fall 2003 Cohort</b>	33%	24%	16%	14%	26%
<b>Fall 2004 Cohort</b>	35%	24%	17%	15%	27%
<b>Fall 2005 Cohort</b>	38%	30%	18%	16%	28%
<b>Fall 2006 Cohort</b>	45%	34%	17%	15%	27%

**Figure 10. Passed gatekeeper math or higher by year 3 by attendance status and age group**



**Table 10-2. Passed gatekeeper math or higher by year 3 by college (Percentage of the total cohort)**

College	Fall '02 Cohort	Fall '03 Cohort	Fall '04 Cohort	Fall '05 Cohort	Fall '06 Cohort
Alamance CC	20%	26%	21%	27%	26%
AB Tech CC	45%	38%	31%	31%	26%
Beaufort CCC	50%	38%	31%	38%	Data not available**
Bladen CC	17%	16%	17%	36%	26%
Blue Ridge CC	17%	26%	24%	30%	20%
Brunswick CC	14%	15%	15%	16%	12%
Caldwell CC & TI	30%	34%	35%	34%	32%
Cape Fear CC	22%	22%	31%	30%	31%
Carteret CC	33%	27%	28%	34%	33%

<b>Catawba Valley CC</b>	33%	34%	32%	35%	38%
<b>Central Carolina CC</b>	29%	27%	22%	27%	28%
<b>Central Piedmont CC</b>	31%	31%	31%	29%	Data not available**
<b>Cleveland CC</b>	38%	26%	26%	25%	17%
<b>Coastal Carolina CC</b>	15%	18%	15%	19%	17%
<b>COA</b>	27%	35%	34%	28%	36%
<b>Craven CC</b>	29%	29%	32%	31%	32%
<b>Davidson County CC</b>	30%	36%	26%	34%	28%*
<b>Durham TCC</b>	30%	23%	49%	43%	44%
<b>Edgecombe CC</b>	14%	17%	26%	18%	18%
<b>Fayetteville TCC</b>	33%	27%	30%	24%	20%
<b>Forsyth TCC</b>	23%	16%	19%	20%	17%*
<b>Gaston College</b>	34%	38%	40%	38%	33%
<b>Guilford TCC</b>	21%	20%	20%	21%	20%
<b>Halifax CC</b>	15%	18%	23%	13%	19%
<b>Haywood CC</b>	28%	28%	32%	43%	36%
<b>Isothermal CC</b>	10%	20%	21%	28%	36%
<b>James Sprunt CC</b>	16%	28%	26%	14%	28%
<b>Johnston CC</b>	50%	41%	55%	56%	43%
<b>Lenoir CC</b>	31%	33%	36%	33%	34%
<b>Martin CC</b>	40%	28%	5%	8%	13%
<b>Mayland CC</b>	29%	8%	10%	21%	30%
<b>McDowell TCC</b>	49%	44%	33%	58%	46%
<b>Mitchell CC</b>	39%	36%	34%	24%	38%

<b>Montgomery CC</b>	12%	0%	8%	16%	20%
<b>Nash CC</b>	32%	32%	38%	35%	Data not available**
<b>Pamlico CC</b>	43%	0%	13%	0%	20%
<b>Piedmont CC</b>	33%	28%	34%	44%	25%
<b>Pitt CC</b>	33%	31%	54%	Data not available**	37%
<b>Randolph CC</b>	14%	13%	12%	17%	25%
<b>Richmond CC</b>	38%	43%	23%	25%	24%
<b>Roanoke-Chowan CC</b>	10%	6%	16%	16%	18%
<b>Robeson CC</b>	3%	4%	2%	8%	7%
<b>Rockingham CC</b>	32%	26%	34%	31%	34%
<b>Rowan-Cabarrus CC</b>	26%	20%	18%	27%	21%
<b>Sampson CC</b>	23%	20%	26%	26%	30%
<b>Sandhills CC</b>	24%	25%	24%	26%	23%
<b>South Piedmont CC</b>	17%	19%	10%	23%	40%
<b>Southeastern CC</b>	16%	19%	14%	10%	22%
<b>Southwestern CC</b>	14%	15%	24%	50%	26%
<b>Stanly CC</b>	19%	17%	18%	17%	14%
<b>Surry CC</b>	40%	32%	37%	38%	49%
<b>Tri-County CC</b>	7%	19%	13%	10%	12%
<b>Vance-Granville CC</b>	31%	32%	30%	35%	22%*
<b>Wake TCC</b>	29%	29%	31%	29%	32%
<b>Wayne CC</b>	24%	28%	28%	26%	22%
<b>Western Piedmont CC</b>	24%	27%	22%	27%	16%*
<b>Wilkes CC</b>	21%	23%	22%	44%	42%

<b>Wilson CC</b>	26%	9%	18%	27%	17%
<b>System Total</b>	<b>26%</b>	<b>26%</b>	<b>27%</b>	<b>28%</b>	<b>27%</b>

\*Incomplete data; not a true reflection of decline or increase\*\*Data not available due to CIS conversion issues.

*For more information or question on methodology, please contact Dr. Soyoung C. Yim at [yims@nccommunitycolleges.edu](mailto:yims@nccommunitycolleges.edu) or (919) 807-6981 at the North Carolina Community College System Office.*