

**2007
Passing Rates for Nursing Graduates
in the
North Carolina Community College System**

**Renee Batts
Program Coordinator, Health Sciences
NC Community College System**

**SBCC
04/18/08**

2007 Passing Rates for Nursing Graduates In the North Carolina Community College System

Background

In the United States, there are two types of licensure exams for nurses: the National Council Licensure Examination for Practical Nurses (NCLEX-PN) and the National Council Licensure Examination for Registered Nurses (NCLEX-RN). In North Carolina, the North Carolina Community College System (NCCCS) prepares graduates to qualify for application to sit for both exams.

In 1994, these examinations became computerized, thus allowing a qualified candidate to sit for an examination anywhere in the United States, regardless of where he/she graduated. In North Carolina, there are six sites available for sitting for the examinations.

Licensed Practical Nursing (LPN): Diploma Program

Forty community colleges are currently approved by the State Board of Community Colleges to offer a PN program designed to prepare graduates to sit for the Practical Nursing examination. Two private institutions also offer programs which prepare graduates for the PN exam. The North Carolina Board of Nursing (NCBON) reported scores for 37 community college PN programs (40 colleges are approved to offer this program, but only 37 program scores are reported because 4 colleges reported as a consortium). In addition, scores were reported from four PN-Exit programs. One program did not have graduates and did not report scores. From 2003 through 2007, the passing rates for candidates sitting for the PN examination have shown a 0.2% decrease nationally, no percentage change in North Carolina or for the NCCCS.

The 2007 passing rates of candidates sitting for the PN examination show a 0.3% decrease nationally, no change for North Carolina or for NCCCS, compared to the 2006 results. The aggregate NCCCS passing rate was 7% above the national passing rate for 2007. These results are presented in Table 1.

Table 1: FIVE YEAR NCLEX PASSING RATES-PN

	2003	2004	2005	2006	2007
National Pass Rate	88.2	89	89.4	88.3	88
State Pass Rate	96	97	93.9	94	94
NC CC Pass Rate	96	96	94	95	95

Seventeen programs reported a perfect passing rate of 100% for 2007, compared to fifteen programs reporting a perfect passing rate of 100% for 2006. There was one program scoring below 80% in 2007, compared to no programs in 2006 (see Attachment 1).

In 2007, a total of 794 community college nursing students were first time NCLEX-PN test takers as compared with 819 in 2006. Of the 794 PN students, 754 students successfully passed the PN licensing examination on the first attempt. This represents a 95% pass rate for first time NCLEX-PN test takers which represent no change from 2006 (see Attachment 2).

Registered Nursing (RN): Associate Degree Program (ADN)

Fifty-five community colleges are approved by the State Board of Community Colleges to offer a program designed to prepare graduates to sit for the RN examination. The NC University System (eleven Bachelor of Science in Nursing (BSN)

programs), hospital education units (two Diploma programs and two ADN programs), and private institutions (four BSN programs and two ADN programs) also prepare graduates to sit for the same RN examination.

The NCBON reported scores for 47 community college programs (55 colleges are approved to offer the program, but only 47 programs scores are reported due to the three consortiums and one program that has not graduated students).

The passing rates of candidates sitting for the RN examination from 2003-2007 have shown no percentage change nationally, a 1% decrease in North Carolina, and a 5% decrease in the NCCCS. The 2007 passing rates of candidates sitting for the RN examination show a 1% decrease nationally, a 1% decrease in North Carolina and a 3% decrease for the NCCCS, compared to the 2006 results. The aggregate NCCCS passing rate for 2007 is 1% below the national passing rate for 2007. These results are presented in Table 2.

Table 2: FIVE YEAR NCLEX PASS RATES-RN

	Candidate	2003	2004	2005	2006	2007
National Pass Rate	All RN	87	85	87.3	88	87
State Pass Rate	All RN	90	86	89	90	89
NC CC Pass Rate	ADN	92	86	89	89	86

Two programs reported a perfect passing rate of 100% for 2007, compared to five programs reporting a perfect passing rate of 100% for 2006. In 2007, nine programs reported passing rates below 80%, two of which reported scores below 80% in 2006. In 2006, seven programs (ten community colleges) reported passing rates below 80% (see Attachment 3).

Of the 2,056 first time test takers, 1,768 ADN students successfully passed the RN licensing examination on the first attempt. This represents an 86% pass rate for first time NCLEX-RN test takers (see Attachment 2.) In 2006, 1752 out of the 2005 first time test takers passed for a rate of 89%.

Table 3 details the NCLEX-RN passing rate by type of candidates. The ADN programs are offered through the community colleges, two private universities, and two hospital-based programs. The BSN programs are the four-year programs offered at public and private universities. Diploma programs are offered at two hospital-based programs.

Table 3: FIVE YEAR NCLEX-RN PASS RATES BY TYPE OF CANDIDATES

	Type of Candidate	2003	2004	2005	2006	2007
National Pass Rate	ADN	87	85	87.5	88	85
State Pass Rate	ADN	91	86	89.3	89	86
NC CC Pass Rate	ADN	92	86	89	89	86
National Pass Rate	BSN	86.9	85	86.7	86.2	86
State Pass Rate	BSN	87	84	87.2	92	90
National Pass Rate	Diploma	89.8	88	90.2	86.2	88
State Pass Rate	Diploma	91	97	99	98	94

Conclusion

Overall nineteen nursing programs reported a perfect passing rate of 100% in 2007. The PN programs all reported passing rates at or above 80% in 2007 and 2006, compared to two programs reporting below 80% in 2005. Nine ADN programs reported passing rates below 80% in 2007, compared to ten programs in 2006. As in the

previous year, the PN and the ADN programs offered by the NCCCS, report aggregate passing rates higher than the national passing rates for 2007.

The NCCCS Office of Planning, Accountability, Research and Evaluation has reviewed and verified the passing rates for licensure exams. Colleges reporting programs with passing rates of less than 80% have been notified and requested to submit action plans to improve performance on those measures.

Orientation sessions were held for the PN and ADN program directors to address issues concerning teaching methodologies, student retention, the requirements in the Nurse Practice Act, educational standards, and other relevant issues. By providing professional development opportunities that increase knowledge, resources, and confidence, directors of nursing programs can continue to positively influence and strengthen RN and PN programs in the NCCCS.

For several years, many have discussed concerns about retention and graduation rates of students who are admitted into our Associate Degree Nursing programs. The Cecil G. Sheps Center for Health Services Research at the University of North Carolina at Chapel Hill has agreed to analyze the multiple factors that lead to student's success.

The study is utilizing three factors that constitute a successful nursing program, as outlined in the *2005 NLNAC's Accreditation Manual with Interpretive Guidelines by Program Type* which are:

1. measurement by graduation rates of students who complete the program within a defined period of time;
2. measurement by performance of licensure examinations of program graduates; and
3. measurement by job placement rates within one year after graduation.

The Sheps Center study will try to identify factors that might be used to improve both Associate Degree Nursing program retention and passing rates of the NCLEX-RN.

Five Year NCLEX Pass Rates-PN

Provided by the NC Board of Nursing

		2003	2004	2005	2006	2007
National Pass Rate		88.2	89	89.4	88.3	88
State Pass Rate		96	97	93.9	94	94
NC CC Pass Rate		96	96	94	95	95
1. Asheville-Buncombe	LPN	100	100	97	97	97
2. Beaufort County CC	LPN	100	100	92	94	92
3. Bladen CC	LPN	97	100	100	100	100
4. Brunswick CC	LPN	100	100	81	90	82
5. Caldwell CC	PN-Exit	100	100	100	100	
6. Cape Fear CC	LPN	100	100	95	100	100
7. Carteret CC	LPN	85	86	95	100	100
8. Central Carolina CC	LPN	96	100	100	97	100
9. Cleveland CC	LPN	100	100	89	81	100
10. Coastal Carolina CC	LPN	100	100	100	100	100
11. College of The Albemarle	LPN	80	78	77	100	94
12. Craven CC	LPN	85	100	100	100	90
13. Durham Tech CC	LPN	88	67	74	97	94
14. Fayetteville Tech CC	LPN	100	100	95	94	98
15. Forsyth Tech CC	LPN	100	100	100	92	93
16. Gaston College	LPN	93	96	97	96	100
17. Guilford Tech	LPN			93	100	88
18. Isothermal CC	LPN	96	100	89	100	100
19. James Sprunt CC	LPN	77	100	100	93	89
20. Johnston CC	PN-Exit	100	100	100	100	100
21. Lenoir CC	LPN	100	93	100	88	83
22. Mayland CC	LPN			88	95	94
23. McDowell Tech CC	LPN	95	95	96	94	97
24. Montgomery CC	LPN	96	96	90	95	100
25. NEWH Nursing Consortium Nash, Edgecombe, Wilson, & Halifax	LPN	97	96	100	99	94
26. Richmond CC	LPN					100
27. Roanoke Chowan CC	PN-Exit	100	100	100	100	100
28. Robeson CC	PN-Exit	100	94	91	89	100
29. Rockingham CC	LPN	81	94	86	80	76
30. Rowan-Cabarrus CC	LPN	95	87	89	88	100
31. Sampson CC	LPN	100	96	97	96	100
32. Sandhills CC	LPN	100	100	88	96	95
33. South Piedmont CC	LPN	80	100	100	100	88
34. Southeastern CC	LPN	100	100	100	83	100
35. Southwestern CC	LPN		100	100	100	100
36. Surry CC	LPN	95	100	100	100	96
37. Vance-Granville CC	LPN	100	91	94	90	93
38. Wayne CC	LPN	93	100	100	100	100

Passing Rates on Licensing and Certification Examinations, 2007

-- Nursing --

First-Time Test Takers

Provided by the NC Board of Nursing

INSTITUTION	FTE	PRACTICAL NURSING		REGISTERED NURSING	
		# TESTED	% PASSED	# TESTED	% PASSED
Alamance CC	3,896			65	94%
Asheville-Buncombe TCC	5,780	33	97%	83	98%
Beaufort County CC	1,709	13	92%	30	80%
Bladen CC	1,406	9	100%	16	81%
Blue Ridge CC	2,183			22	91%
Brunswick CC	1,457	22	82%	40	58%
Caldwell CC & TI	3,947			45	71%
Cape Fear CC	6,758	19	100%	48	98%
Carteret CC	1,718	12	100%	10	90%
Catawba Valley CC	4,622			58	86%
Central Carolina CC	5,159	25	100%	13	100%
Central Piedmont CC	13,250			52	96%
Cleveland CC*	2,973	6	100%		
Coastal Carolina CC	4,303	16	100%	27	96%
College of The Albemarle	2,239	17	94%	20	90%
Craven CC	2,707	10	90%	51	82%
Davidson County CC	3,444			41	93%
Durham TCC	4,588	16	94%	28	93%
Edgecombe CC**	2,305				
Fayetteville TCC	10,560	51	98%	91	86%
Forsyth TCC	6,514	44	93%	108	89%
Gaston College	4,467	36	100%	61	89%
Guilford TCC	9,065	16	88%	58	88%
Halifax CC**	1,538	8	88%	21	71%
Haywood CC***	1,935				
Isothermal CC*	2,177	29	100%		
James Sprunt CC	1,311	9	89%	33	85%
Johnston CC	3,813	19	100%	30	97%
Lenoir CC	3,173	6	83%	33	61%
Martin CC	925				
Mayland CC	1,963	17	94%	25	88%
McDowell TCC*	1,338	37	97%		
Mitchell CC	2,272			37	95%
Montgomery CC	1,010	25	100%		
Nash CC**	2,503				
Pamlico CC	575				
Piedmont CC	2,547			16	88%
Pitt CC	5,656			59	88%
Randolph CC	2,428			24	88%
Richmond CC	2,040	16	100%	51	84%
Roanoke-Chowan CC	949	18	100%	21	90%

INSTITUTION (continued)	FTE	PRACTICAL NURSING		REGISTERED NURSING	
		# TESTED	% PASSED	# TESTED	% PASSED
Robeson CC	3,671	1	100%	15	80%
Rockingham CC	2,060	29	76%	33	64%
Rowan-Cabarrus CC	4,685	20	80%	35	69%
Sampson CC	1,761	26	100%	32	88%
Sandhills CC	3,612	20	95%	55	93%
South Piedmont	2,156	16	88%		
Southeastern CC	2,381	22	100%	54	74%
Southwestern CC***	2,216	9	100%		
Stanly CC	2,290			40	98%
Surry CC	2,960	24	96%	49	78%
Tri-County CC***	1,076				
Vance-Granville CC	4,213	29	93%	45	93%
Wake TCC	11,166			71	83%
Wayne CC	3,479	11	100%	27	96%
Western Piedmont CC	2,959			26	100%
Wilkes CC	2,757			31	87%
Wilson TCC**	2,112				
Foothills Nursing Consortium*				79	71%
NEWH Nursing Consortium**		66	94%	117	84%
Region A Nursing Consortium***				51	71%
System Totals	198,759	794	95%	2,056	86%

* Foothills Nursing Consortium includes: Cleveland CC, Isothermal CC, McDowell TCC.

** NEWH Nursing Consortium includes: Nash CC, Edgecombe CC, Wilson TCC, and Halifax CC.

*** Region A Nursing Consortium includes: Haywood CC, Southwestern CC, and Tri-County CC.

Provided by the NC Board of Nursing

Five Year NCLEX Pass Rates-RN

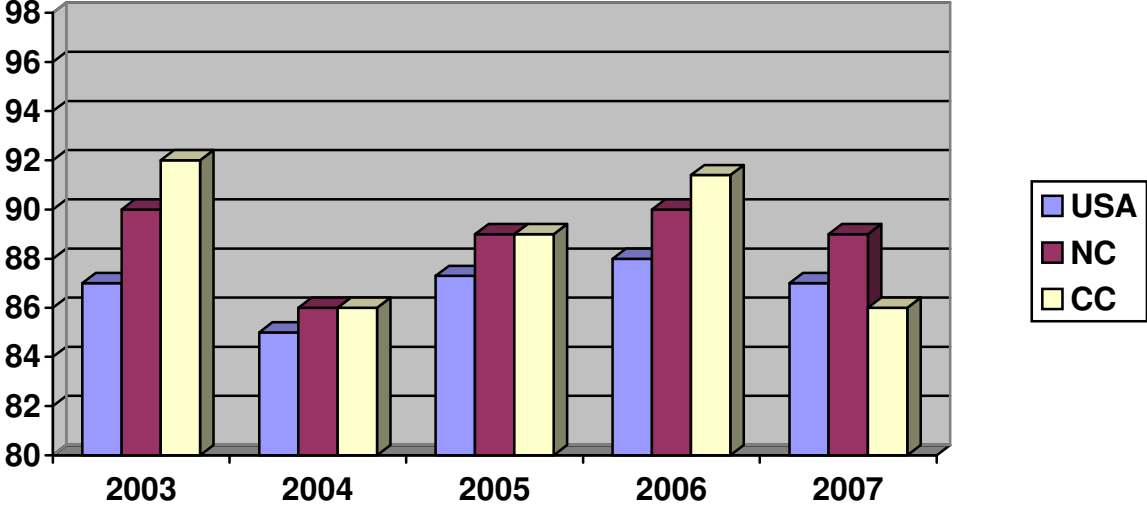
Provided by the NC Board of Nursing

		2003	2004	2005	2006	2007
National Pass Rate	ALL RN	87	85	87.3	88	87
State Pass Rate	ALL RN	90	86	89	90	89
NCCCS Pass Rate	ADN	92	86	89	89	86
National Pass Rate	ADN	87	85	87.5	88	85
State Pass Rate	ADN	91	86	89.3	89	86
1. Alamance CC	ADN	94	78	83	87	94
2. Asheville-Buncombe CC	ADN	97	92	91	96	98
3. Beaufort County CC	ADN	93	82	85	92	80
4. Bladen CC	ADN				53	81
5. Blue Ridge CC	ADN	100	88	90	81	91
6. Brunswick	ADN					58
7. Caldwell CC	ADN	81	91	84	90	71
8. Cape Fear CC	ADN	97	89	100	100	98
9. Carteret CC	ADN					90
10. Catawba Valley CC	ADN	91	93	84	88	86
11. Central Carolina CC	ADN	100	88	100	100	100
12. Central Piedmont CC	ADN	91	92	76	88	96
13. Coastal Carolina CC	ADN	88	92	91	96	96
14. College of The Albemarle	ADN	96	90	100	96	90
15. Craven CC	ADN	91	74	86	90	82
16. Davidson County CC	ADN	92	100	98	98	93
17. Durham Tech CC	ADN	96	90	91	96	93
18. Fayetteville Tech CC	ADN	82	90	89	82	86
19. Foothills Nursing Consortium * <i>Cleveland, Isothermal, McDowell</i>	ADN	97	83	87	71	71
20. Forsyth Tech CC	ADN	95	77	86	90	89
21. Gaston College CC	ADN	100	95	86	90	89
22. Guilford Tech CC	ADN	86	100	93	97	88
23. James Sprunt CC	ADN	100	91	90	77	85
24. Johnston CC	ADN	91	97	100	97	97
25. Lenoir CC	ADN	83	83	77	97	61
26. Mayland CC	ADN	94	77	100	100	88
27. Mitchell CC	ADN	96	100	97	100	95
28. NEWH Nursing Consortium * <i>Nash, Edgecombe, Wilson, Halifax</i>	ADN	94	83	95	91	84
29. Piedmont CC	ADN	100	75	93	95	88
30. Pitt CC	ADN	93	92	91	80	88

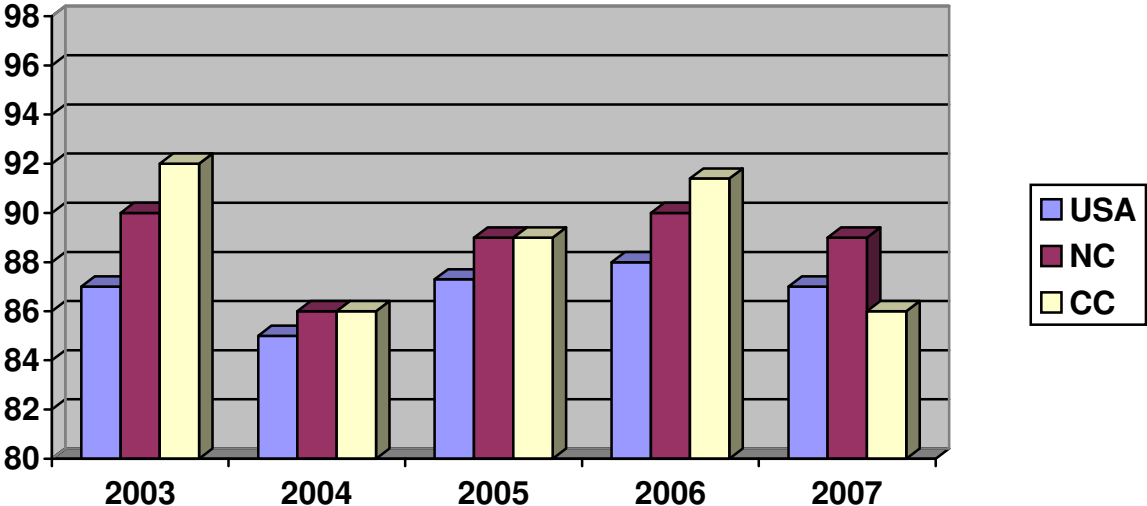
31. Randolph CC	ADN	86	76	76	71	88
32. Region A Nursing Consortium <i>Haywood</i> <i>Southwestern</i> <i>Tri-County</i>	ADN	94 * * *	85 84 75 100	90 79 85 100	84 100 80 73	71 * * *
33. Richmond CC	ADN	94	89	78	88	84
34. Roanoke-Chowan CC	ADN	91	83	100	95	90
35. Robeson CC	ADN	83	56	57	96	80
36. Rockingham CC	ADN	100	88	96	74	64
37. Rowan-Cabarrus CC	ADN	93	94	100	100	69
38. Sampson CC	ADN	96	92	88	77	88
39. Sandhills CC	ADN	85	91	84	94	93
40. Southeastern CC	ADN	100	82	92	83	74
41. Stanly CC	ADN	88	82	97	92	98
42. Surry CC	ADN	85	73	99	95	78
43. Vance-Granville CC	ADN	89	75	79	74	93
44. Wake Tech CC	ADN	92	94	91	84	83
45. Wayne CC	ADN	92	91	93	91	96
46. Western Piedmont CC	ADN	86	59	88	97	100
47. Wilkes CC	ADN	82	88	65	86	87

** Individual scores not reported.*

Five Year NCLEX Pass Rates Practical Nursing-PN

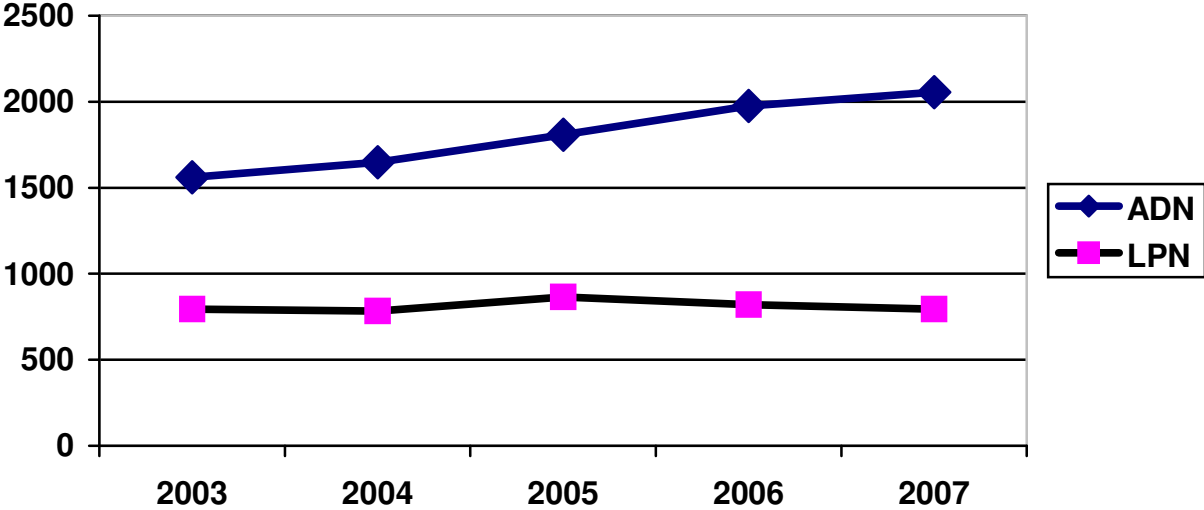


Five Year NCLEX Pass Rates Registered Nursing-RN



Provided by the NC Board of Nursing

**Numbers of First Time NCLEX Test Takers NCCCS
2003-2007
PN & RN**



Provided by the NC Board of Nursing